



## USER GUIDE



## SUPRAPUBIC INSERTION UNIT



This product is available  
in light and dark skin tones

**60852**

**60873**

FOR MORE SKILLS TRAINING PRODUCTS VISIT

**[limbsandthings.com](https://limbsandthings.com)**

Sussex Street, St Philips, Bristol, BS2 0RA, UK | [sales@limbsandthings.com](mailto:sales@limbsandthings.com) | +44 (0) 117 311 0500

## INDEX

PACKAGE SUPPLIED	2
SAFETY & CLEANING INSTRUCTIONS	3
QUICK START	4
• ASSEMBLING THE WATER SYSTEM	4
• EMPTYING WATER	6
• REASSEMBLY	7

## PACKAGE SUPPLIED

Suprapubic Catheterization Module

60857

60876



Water System

60893



Suprapubic Insertion Bungs (x2)

60858

60877



Antifungal Agent (Milton)

50185



## SAFETY & CLEANING INSTRUCTIONS

READ THE SAFETY INSTRUCTIONS CAREFULLY  
BEFORE USING YOUR CATHETERIZATION TRAINER

### DO's



Follow all instructions.  
Keep these instructions.  
Pay attention to all warnings.

Only use attachments/accessories  
specified by Limbs & Things.



Refer all servicing to qualified service  
personnel. Servicing is required when  
the apparatus has been damaged.

Drain all water from the product  
and clean with a damp, soft cloth  
or sponge, using only warm water  
with mild detergent.



Use only the Milton Antifungal  
agent supplied to sterilize water.

### DON'Ts



Do not install near any heat sources,  
expose the product to flames or use  
near naked flame sources.  
Do not use flammable solvents near  
or on this product.

Do not set up the product near  
electrical appliances or items  
damaged by water.



Do not leave catheters inserted  
in the Trainer.

Do not attempt to remove a catheter  
which has an inflated balloon.



Do not disassemble the product or  
attempt to repair a faulty unit. Please  
return the product to Limbs & Things  
for assessment and repair.



### STORAGE & TRANSPORTATION

Always ensure that the product is properly packed and secured during transportation  
and storage in order to prevent personal injury or damage to the product.

# TAKE A LOOK AT OUR VIDEO

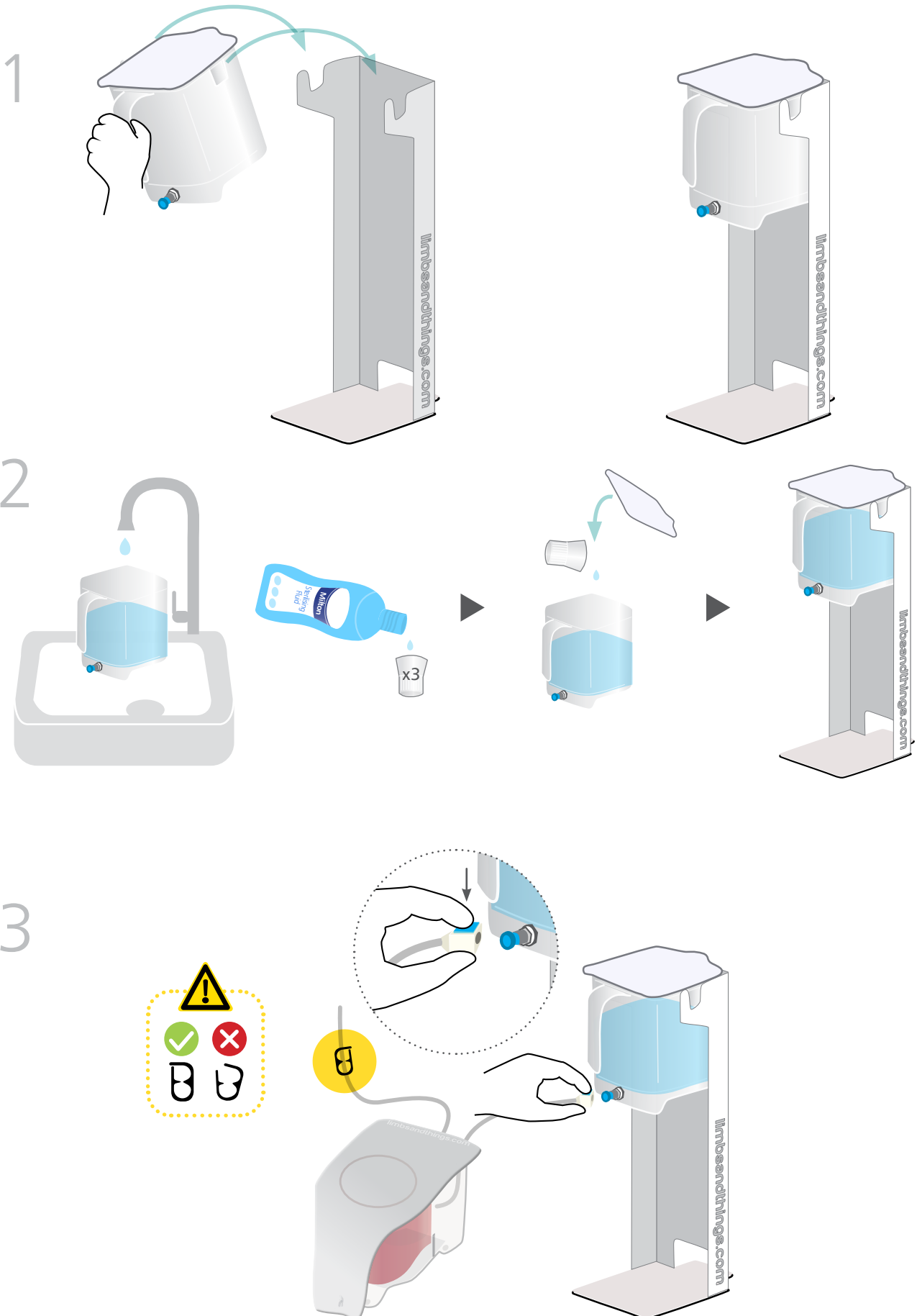
VISIT THE WEBSITE  
[limbsandthings.com](https://limbsandthings.com)

OR YOUTUBE CHANNEL  
[youtube.com/limbsandthings](https://youtube.com/limbsandthings)

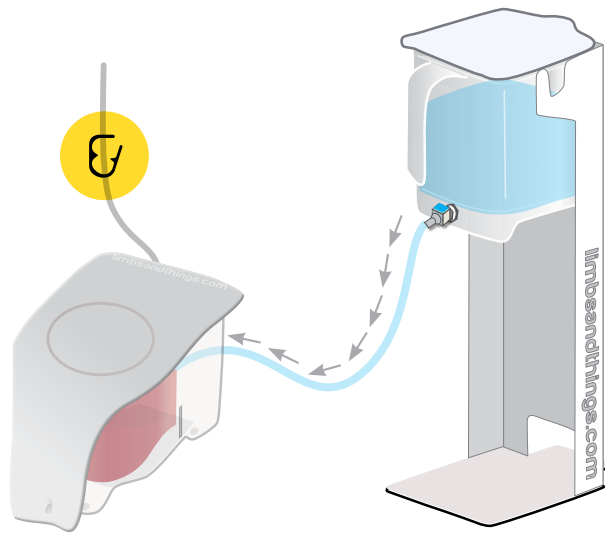


## QUICK START

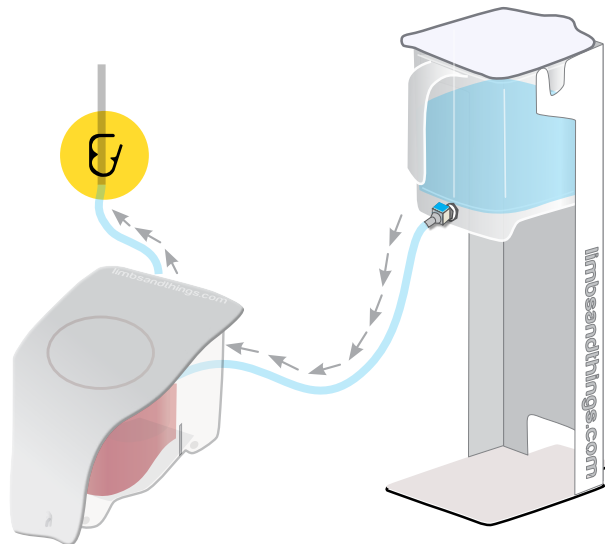
### ASSEMBLING THE WATER SYSTEM



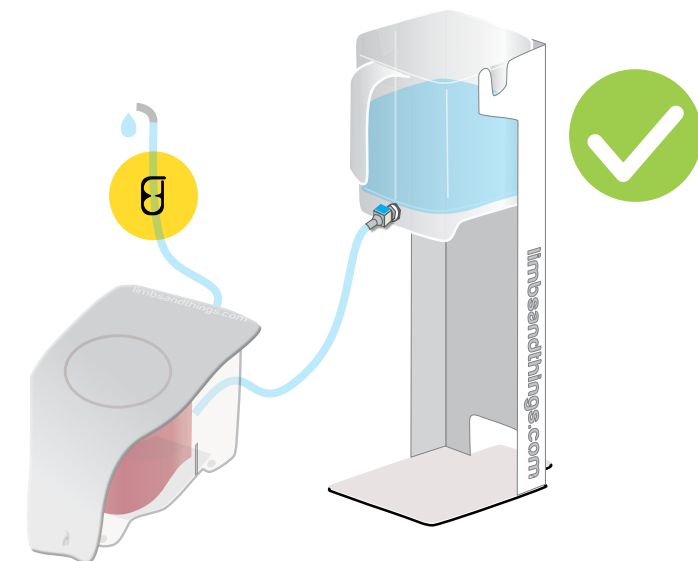
4



5

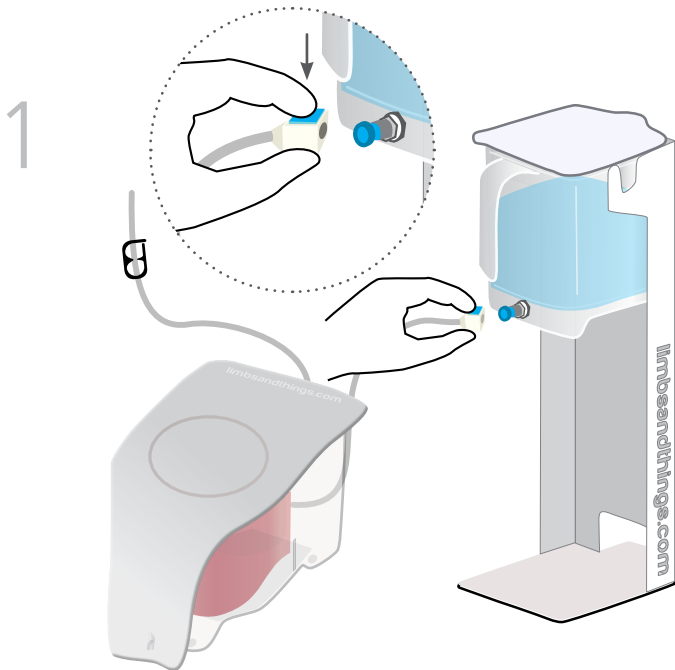


6

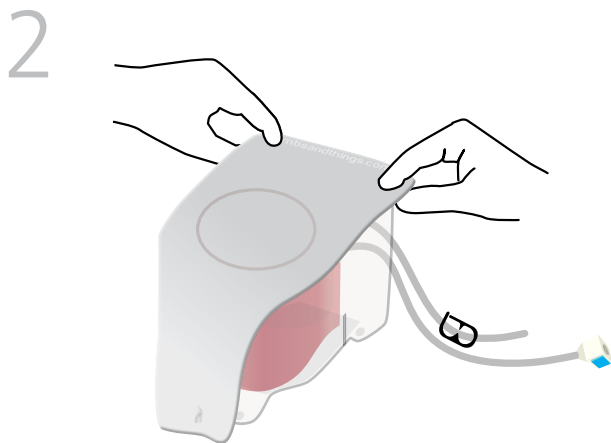
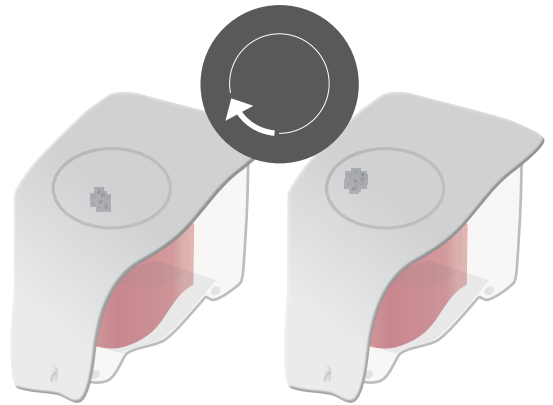


## QUICK START

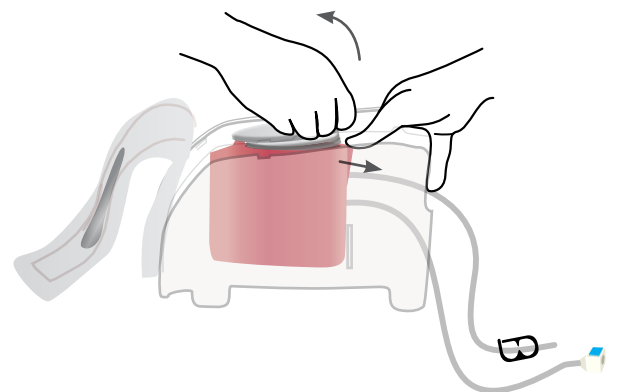
### EMPTYING WATER



Rotating the bung provides greater usage



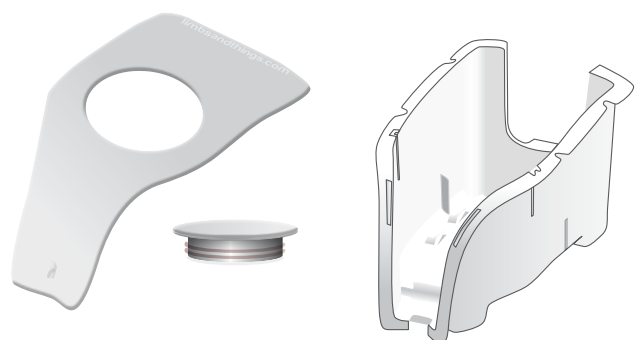
3



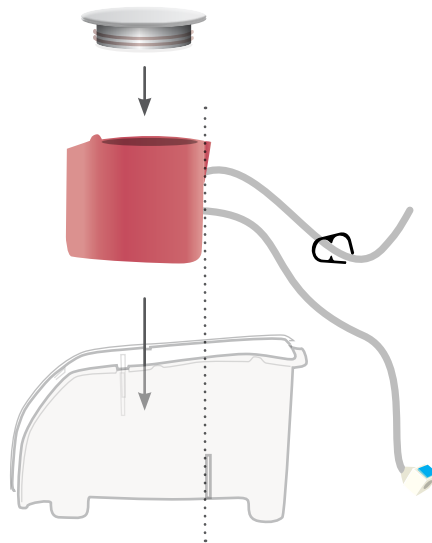
4



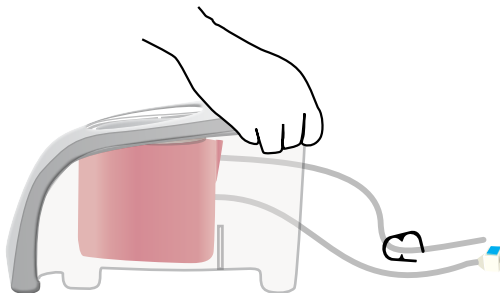
Dry all parts with paper towel  
Reassemble and put in box



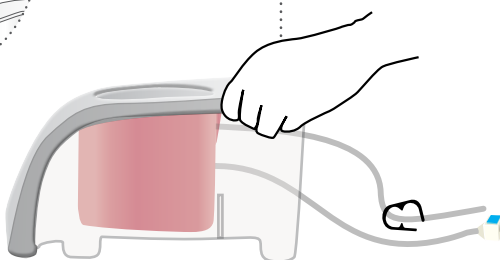
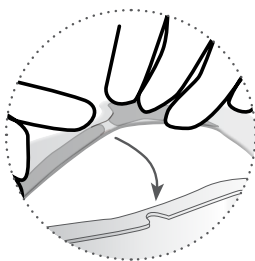
1



2



6

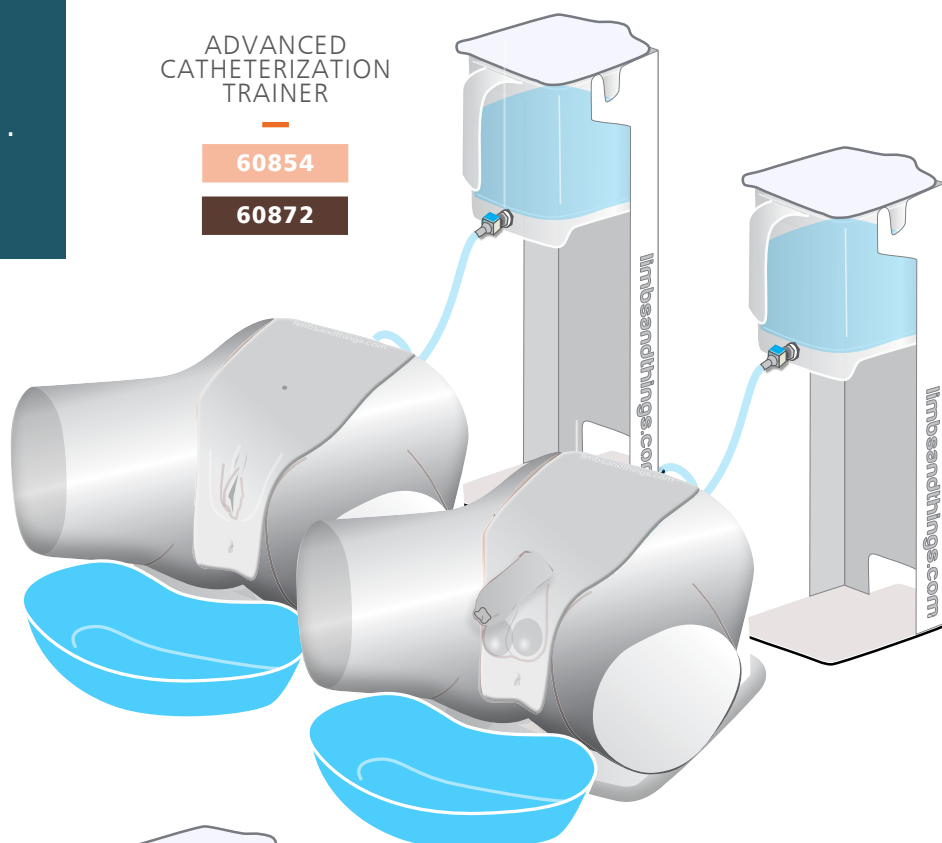


YOU MAY  
ALSO BE  
INTERESTED IN...

ADVANCED  
CATHETERIZATION  
TRAINER

60854

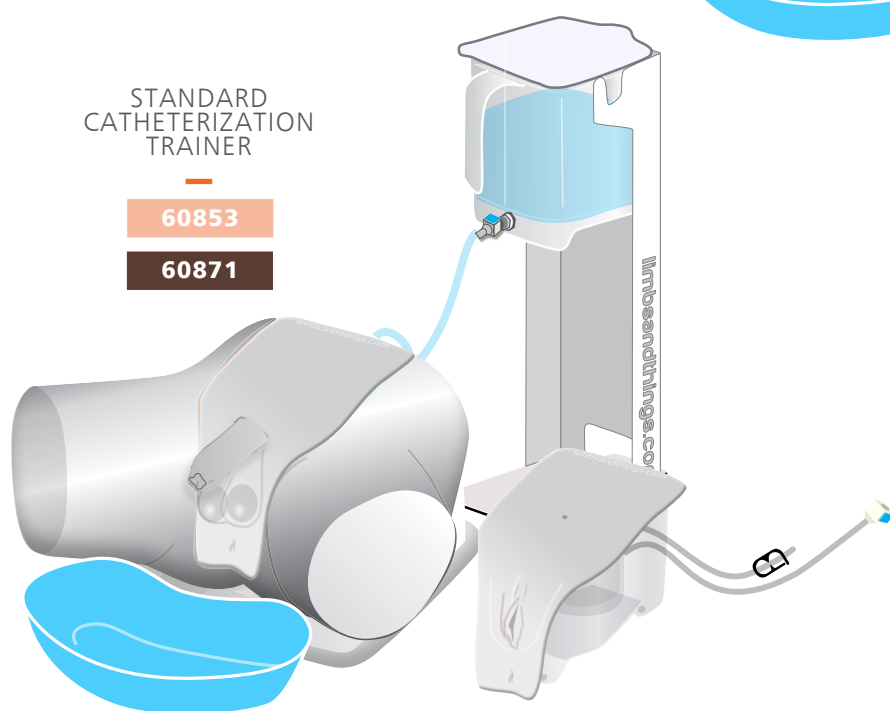
60872



STANDARD  
CATHETERIZATION  
TRAINER

60853

60871



MEDIUM  
CARRY CASE

40209



limbs&  
things

Part No: 965-510

Issue 04, May 2025

© 2025 Limbs & Things



FM 818255