



USER GUIDE



SUPRAPUBIC INSERTION UNIT

This product is available
in light and dark skin tones

60852

60873

FOR MORE SKILLS TRAINING PRODUCTS VISIT

limbsandthings.com

Sussex Street, St Philips, Bristol, BS2 0RA, UK | sales@limbsandthings.com | +44 (0) 117 311 0500

INDEX

PACKAGE SUPPLIED	2
SAFETY & CLEANING INSTRUCTIONS	3
QUICK START	4
• ASSEMBLING THE WATER SYSTEM	4
• EMPTYING WATER	6
• REASSEMBLY	7

PACKAGE SUPPLIED

Suprapubic Catheterization Module

60857

60876



Water System

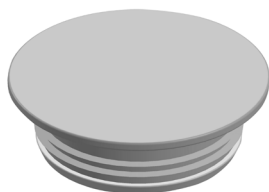
60893



Suprapubic Insertion Bungs (x2)

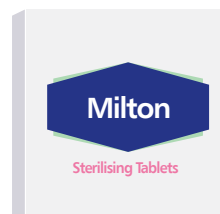
60858

60877



Antifungal Agent (Milton)

120-156



SAFETY & CLEANING INSTRUCTIONS

READ THE SAFETY INSTRUCTIONS CAREFULLY BEFORE USING YOUR CATHETERIZATION TRAINER

DO's



Follow all instructions. Keep these instructions. Pay attention to all warnings.

Only use attachments/accessories specified by Limbs & Things.



Refer all servicing to qualified service personnel. Servicing is required when the apparatus has been damaged.

Drain all water from the product and clean with a damp, soft cloth or sponge, using only warm water with mild detergent.



Use only the Milton Antifungal agent supplied to sterilize water.

DON'Ts



Do not install near any heat sources, expose the product to flames or use near naked flame sources. Do not use flammable solvents near or on this product.

Do not set up the product near electrical appliances or items damaged by water.



Do not leave catheters inserted in the Trainer.

Do not attempt to remove a catheter which has an inflated balloon.



Do not disassemble the product or attempt to repair a faulty unit. Please return the product to Limbs & Things for assessment and repair.



STORAGE & TRANSPORTATION

Always ensure that the product is properly packed and secured during transportation and storage in order to prevent personal injury or damage to the product.

TAKE A LOOK AT OUR VIDEO

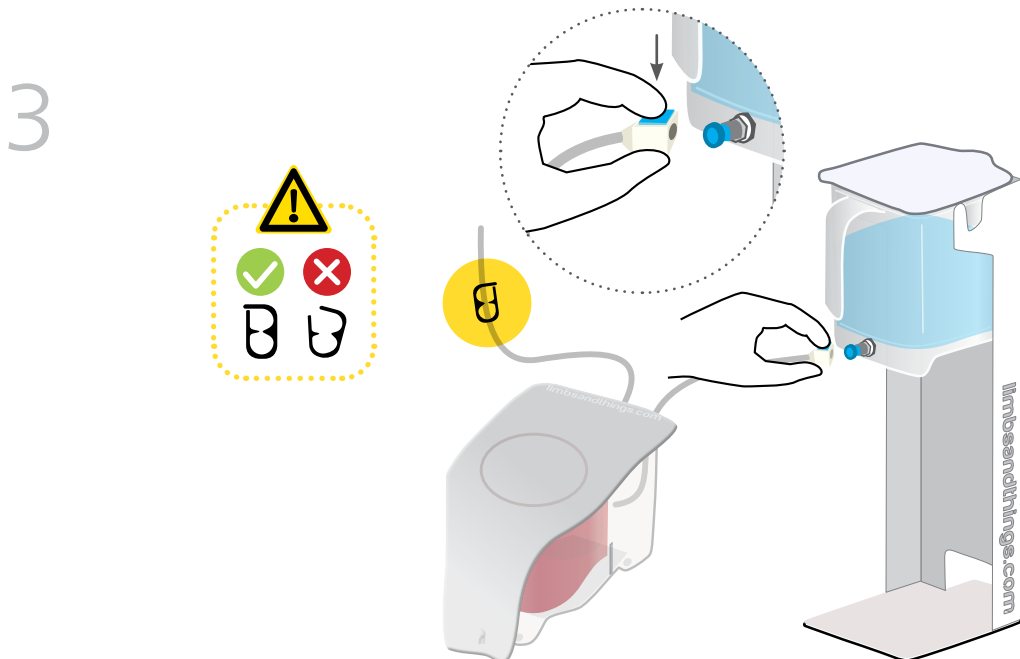
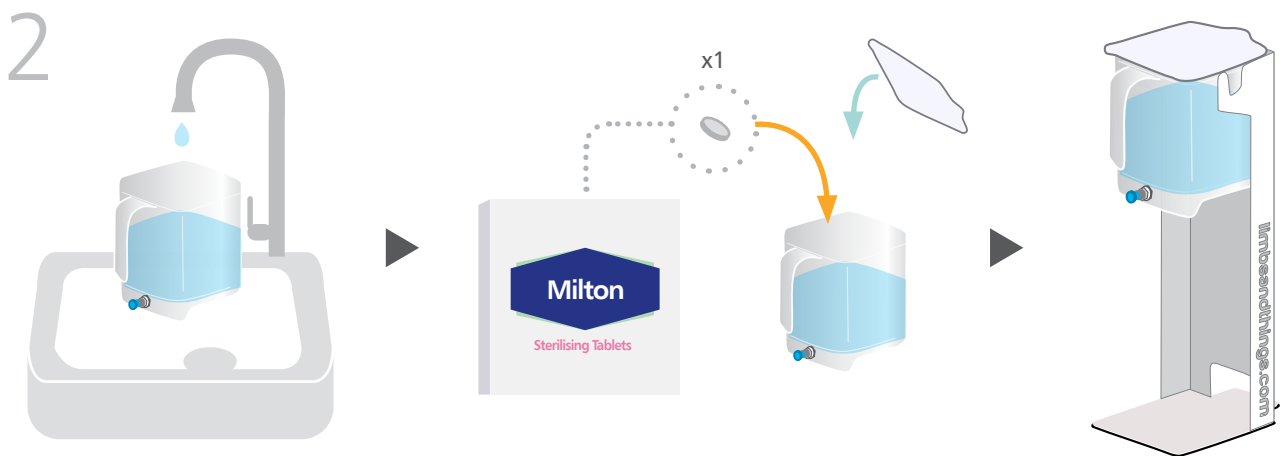
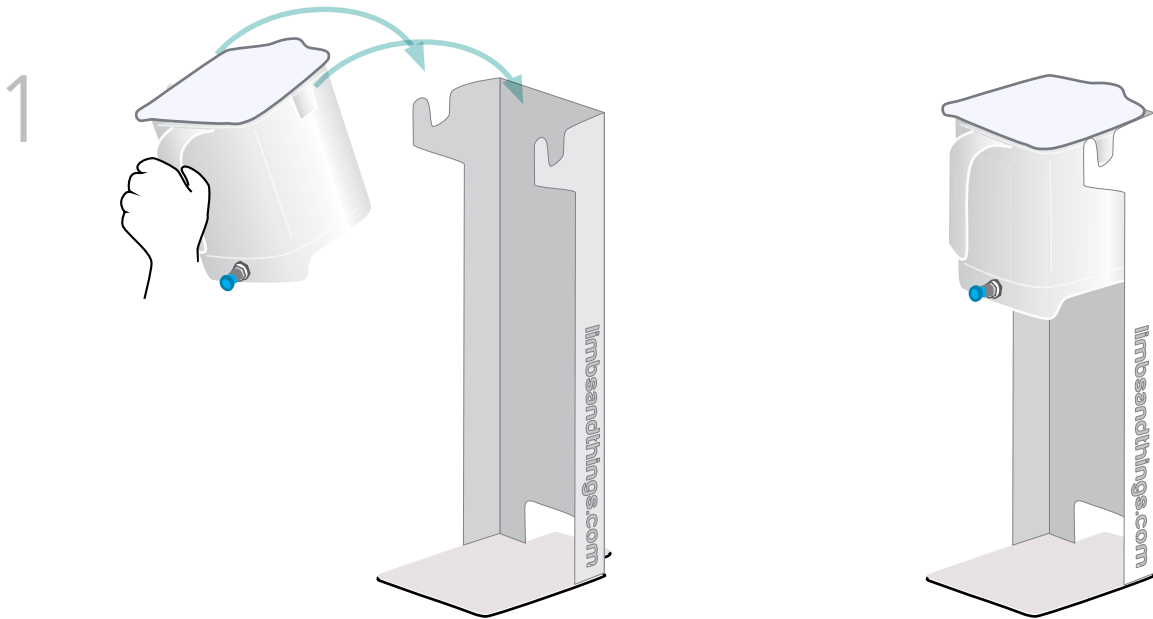
VISIT THE WEBSITE
limbsandthings.com

OR YOUTUBE CHANNEL
youtube.com/limbsandthings

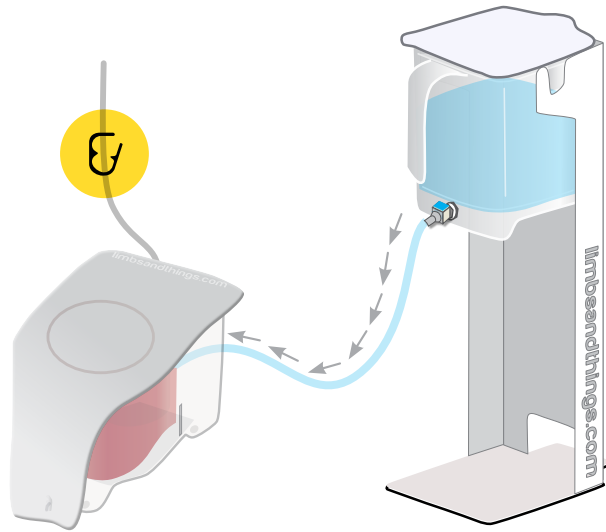


QUICK START

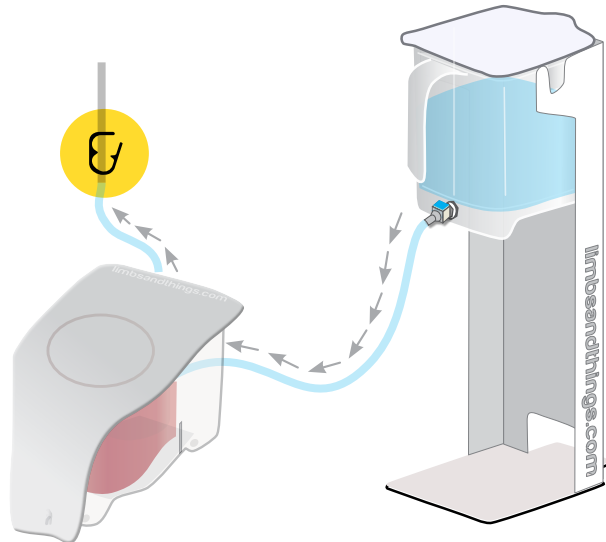
ASSEMBLING THE WATER SYSTEM



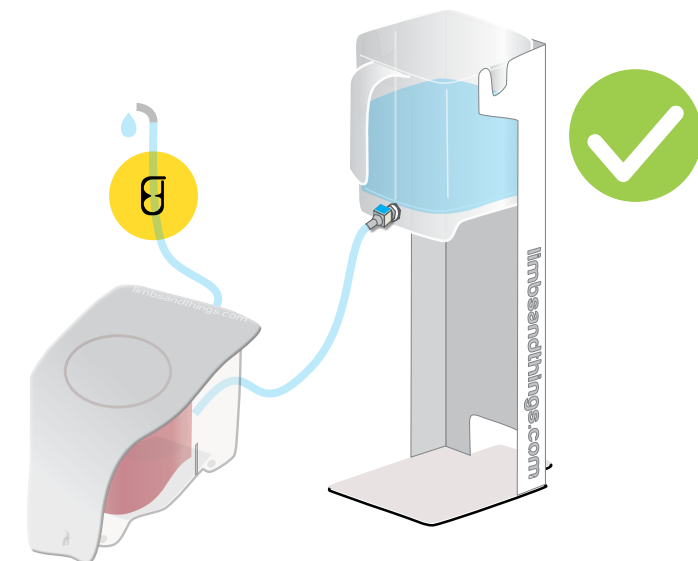
4



5

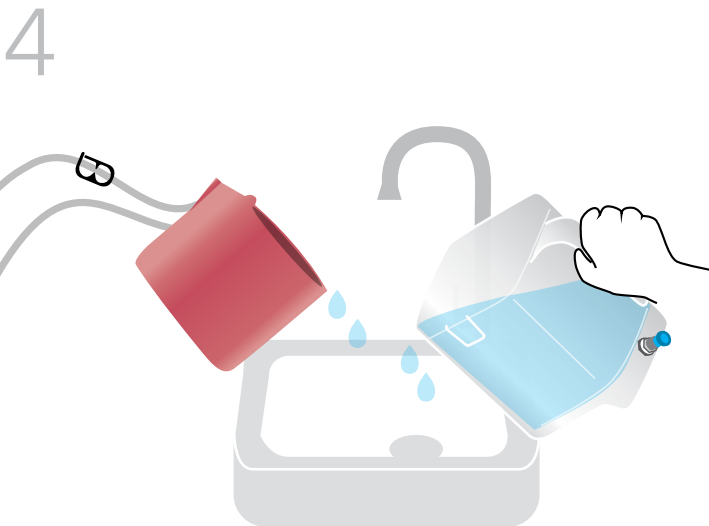
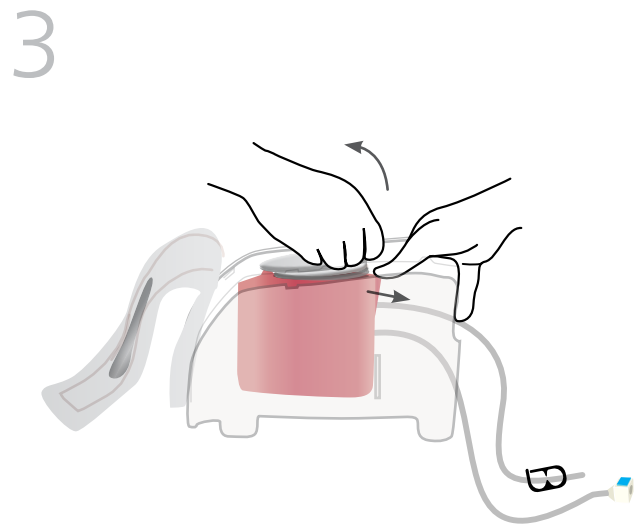
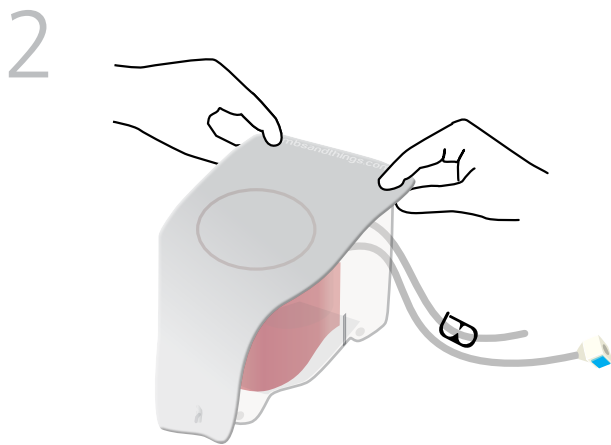
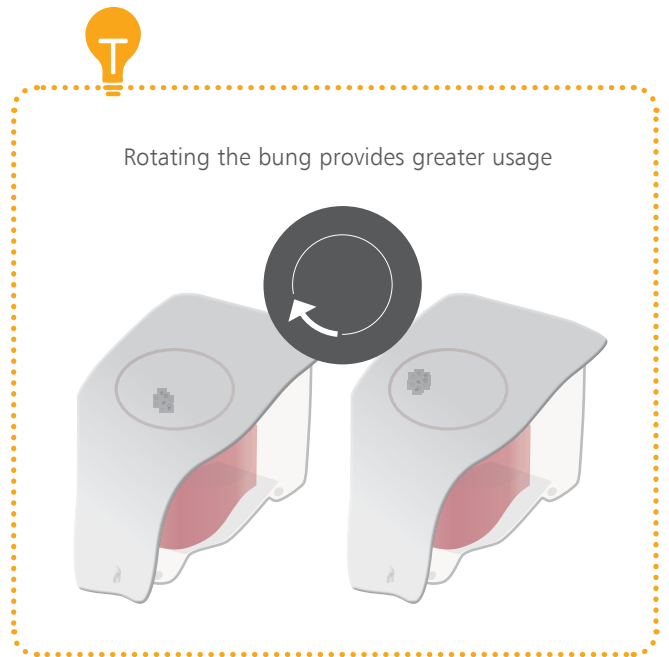
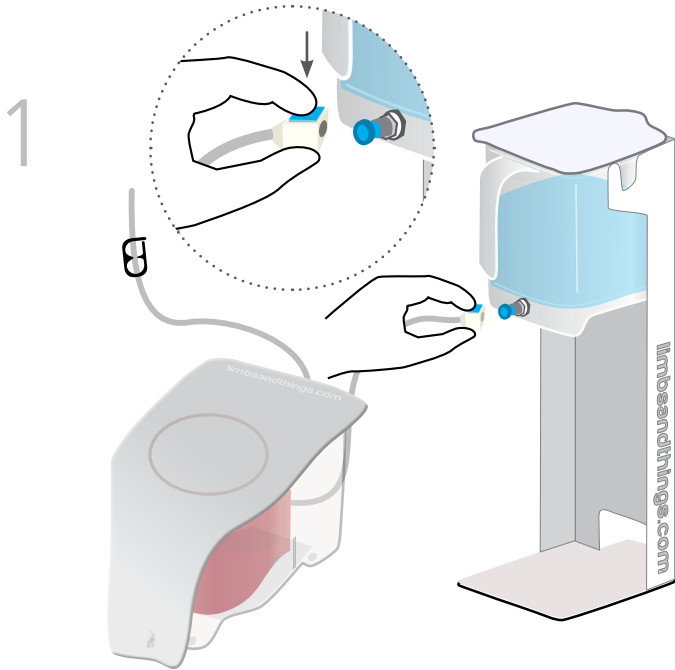


6

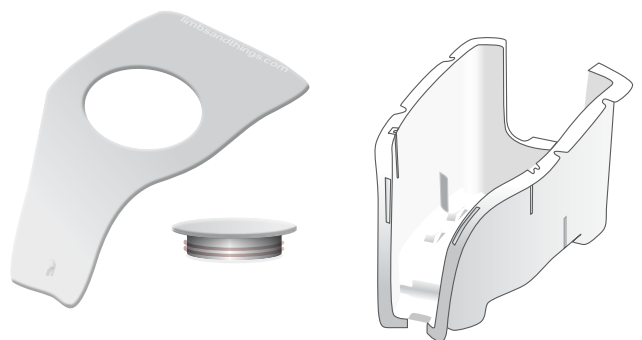


QUICK START

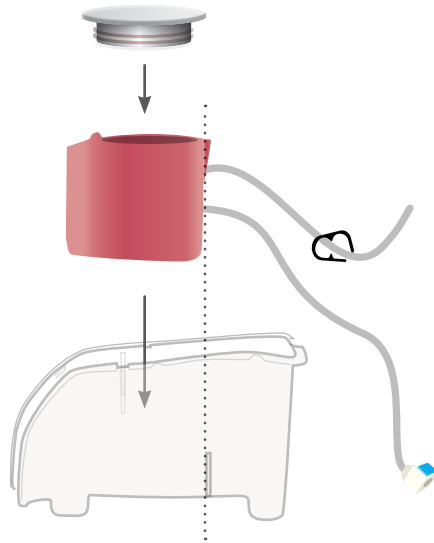
EMPTYING WATER



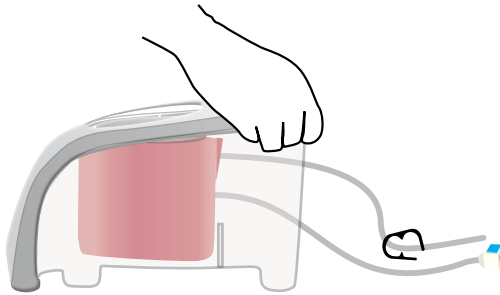
Dry all parts with paper towel
Reassemble and put in box



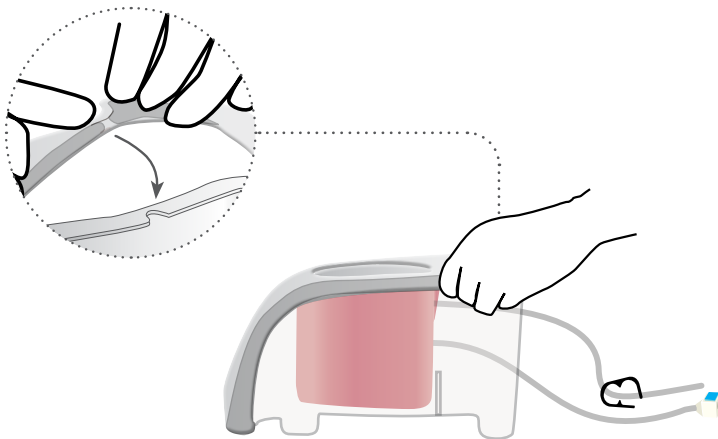
1



2



6

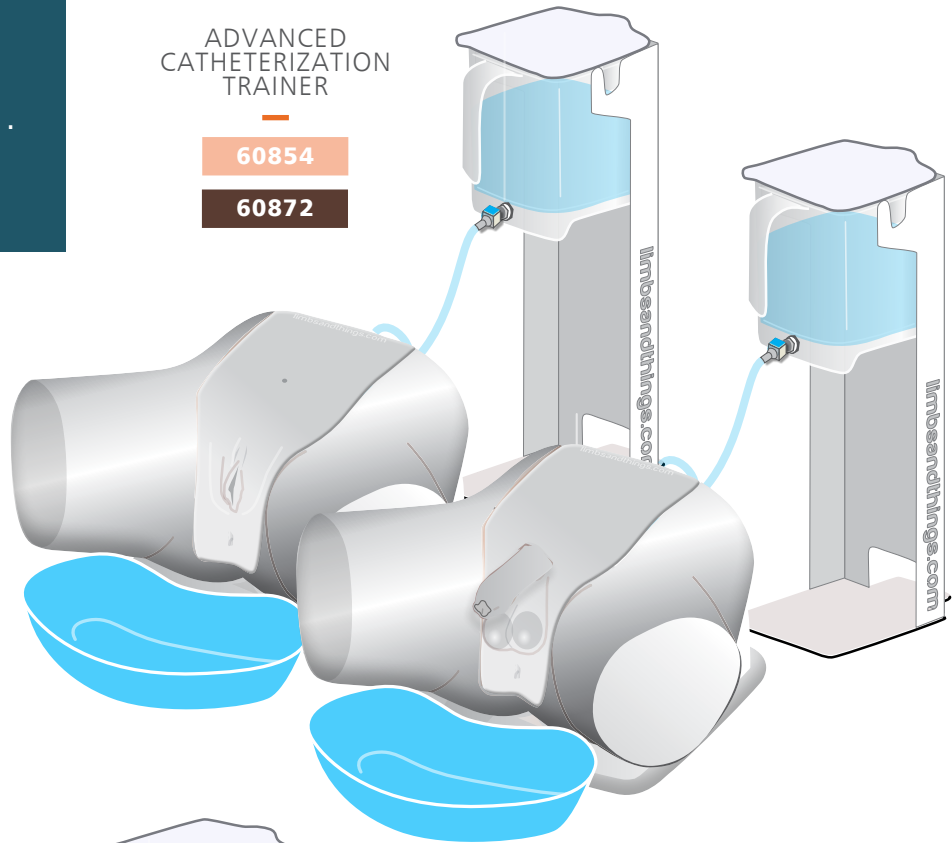


YOU MAY
ALSO BE
INTERESTED IN...

ADVANCED
CATHETERIZATION
TRAINER

60854

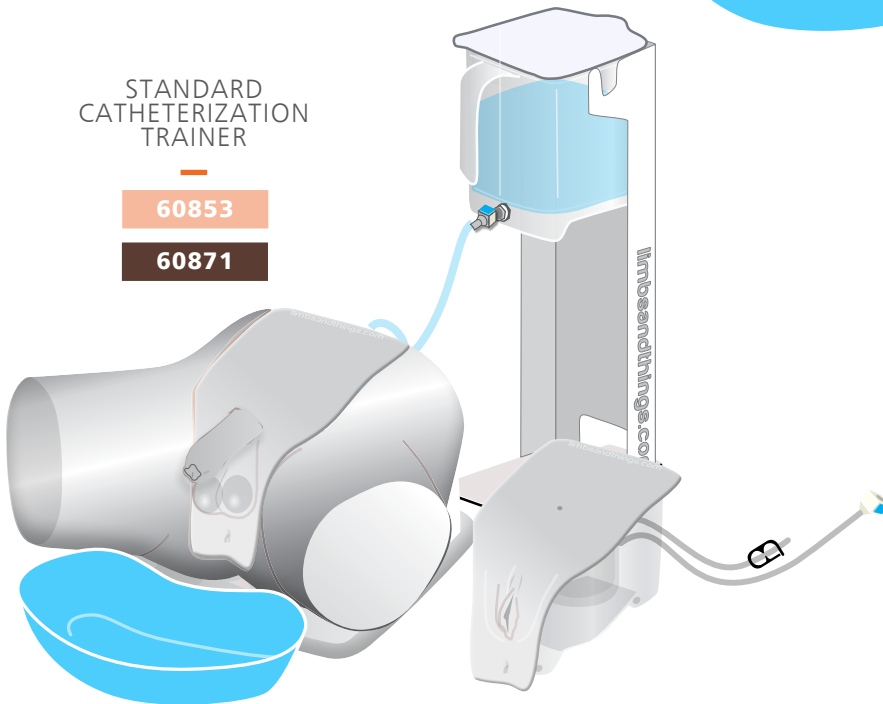
60872



STANDARD
CATHETERIZATION
TRAINER

60853

60871



MEDIUM
CARRY CASE

40209



limbs &
things

Part No: 965-510

Issue 05, February 2026
© 2026 Limbs & Things



FM 818255