



## USER GUIDE



## ADVANCED CATHETERIZATION TRAINER SET

**60854**

**60872**



MALE CATHETERIZATION TRAINER

**60850**

**60870**

FEMALE CATHETERIZATION TRAINER

**60851**

**60869**

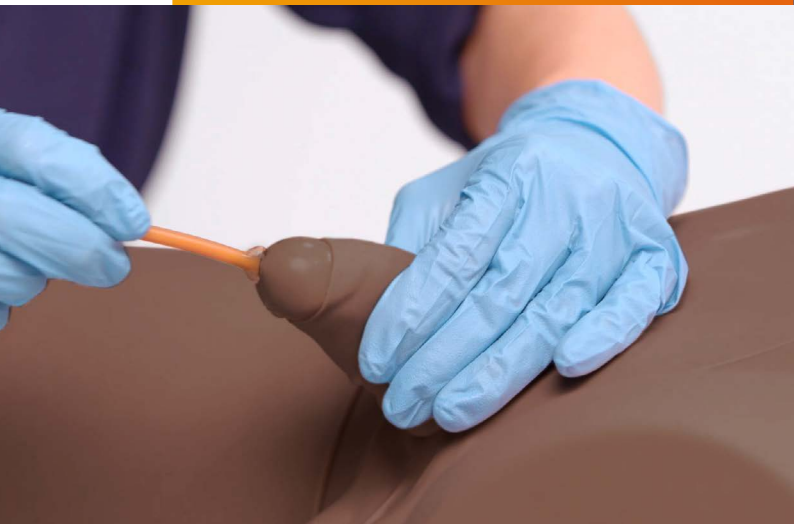
FOR MORE SKILLS TRAINING PRODUCTS VISIT

**[limbsandthings.com](https://limbsandthings.com)**

Sussex Street, St Philips, Bristol, BS2 0RA, UK | [sales@limbsandthings.com](mailto:sales@limbsandthings.com) | +44 (0) 117 311 0500



## USER GUIDE



# MALE CATHETERIZATION TRAINER

This product is available  
in light and dark skin tones

**60850**

**60870**

FOR MORE SKILLS TRAINING PRODUCTS VISIT

**[limbsandthings.com](https://limbsandthings.com)**

Sussex Street, St Philips, Bristol, BS2 0RA, UK | [sales@limbsandthings.com](mailto:sales@limbsandthings.com) | +44 (0) 117 311 0500

PACKAGE SUPPLIED	3
SAFETY & CLEANING INSTRUCTIONS	4
SET UP	5
• PLACING PELVIC SHELL	5
• FITTING THE FORESKIN	6
• ASSEMBLING THE WATER SYSTEM	7
• EMPTYING WATER	9
• REASSEMBLY	10
AUGMENTED REALITY TRAINING (ART)	12
• SAFETY & CLEANING INSTRUCTIONS	12
• ART SET UP	13

TAKE A LOOK  
AT OUR **VIDEO**



VISIT THE WEBSITE  
**[limbsandthings.com](http://limbsandthings.com)**

OR YOUTUBE CHANNEL  
**[youtube.com/limbsandthings](https://youtube.com/limbsandthings)**

## PACKAGE SUPPLIED

Male Catheterization Module

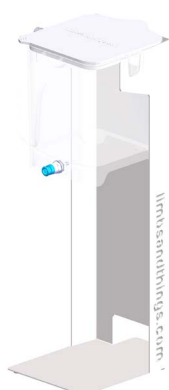
60855

60874



Water System

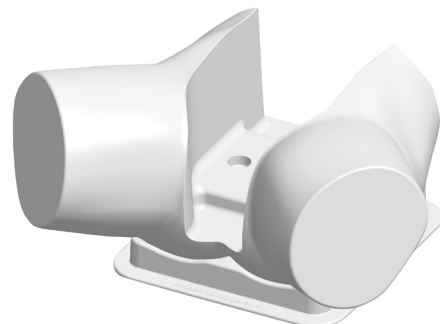
60893



Pelvic Shell & Stand

60864

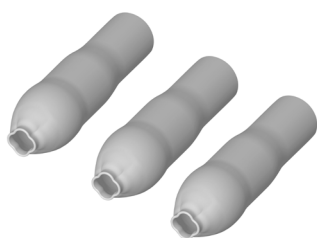
60881



Catheterization Foreskins (x3)

60859

60878



Aseptic Catheterization Sleeves (x2)

60862



Lubricant Gel with Syringe

60892



Antifungal Agent (Milton)

50185



Plastic Kidney Dish



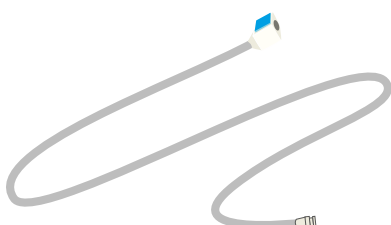
Lubricant Gel Sachet

027-113

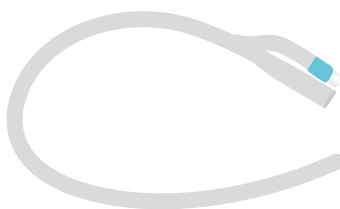
Lubricant Gel

Water Extension Tubing

60867



14 French Foley Catheter



ART mat

60131



## SAFETY & CLEANING INSTRUCTIONS

READ THE SAFETY INSTRUCTIONS CAREFULLY  
BEFORE USING YOUR CATHETERIZATION TRAINER

### DO's



Follow all instructions.  
Keep these instructions.  
Pay attention to all warnings.

Only use attachments/accessories specified by Limbs & Things.



Refer all servicing to qualified service personnel. Servicing is required when the apparatus has been damaged.

Wear gloves at all times and remove all jewellery items. Sharp surfaces such as finger nails and rings can lead to damage of silicone parts.



Use lubrication when inserting catheter.

Use only the Milton Antifungal agent supplied to sterilize water.



Use 14 French Foley catheter (male length).

Drain all water from the product and clean with a damp, soft cloth or sponge, using only warm water with mild detergent.



### DON'Ts



Do not install near any heat sources, expose the product to flames or use near naked flame sources.  
Do not use flammable solvents near or on this product.

Do not set up the product near electrical appliances or items damaged by water.



Do not leave catheters inserted in the Trainer.

Do not attempt to remove a catheter which has an inflated balloon.



Do not use anaesthetic gel – use mock gel supplied with trainer.

Do not disassemble the product or attempt to repair a faulty unit. Please return the product to Limbs & Things for assessment and repair.



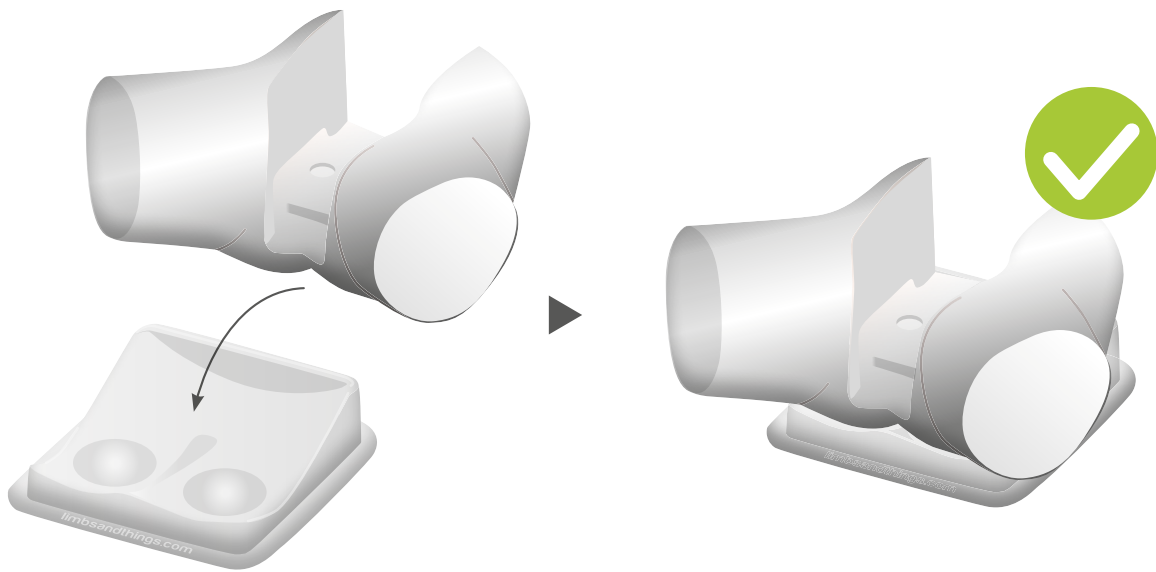
Do not leave trainer set up with water in. Disassemble & clean after every use.

### STORAGE & TRANSPORTATION

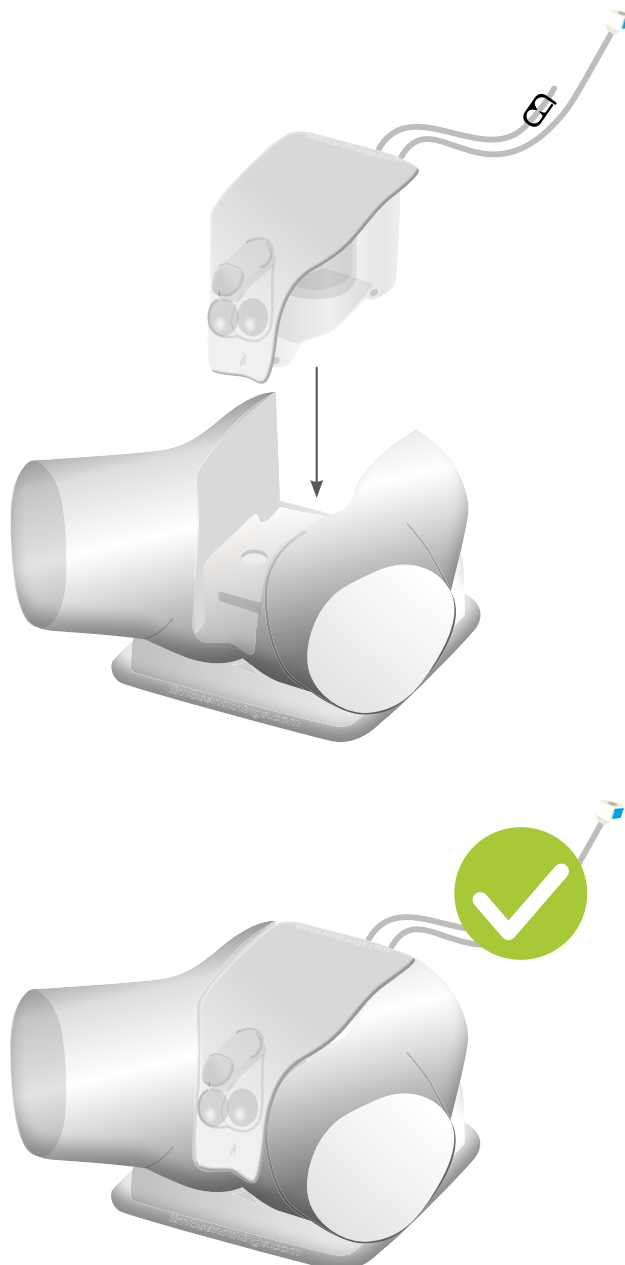


Always ensure that the product is properly packed and secured during transportation and storage in order to prevent personal injury or damage to the product.

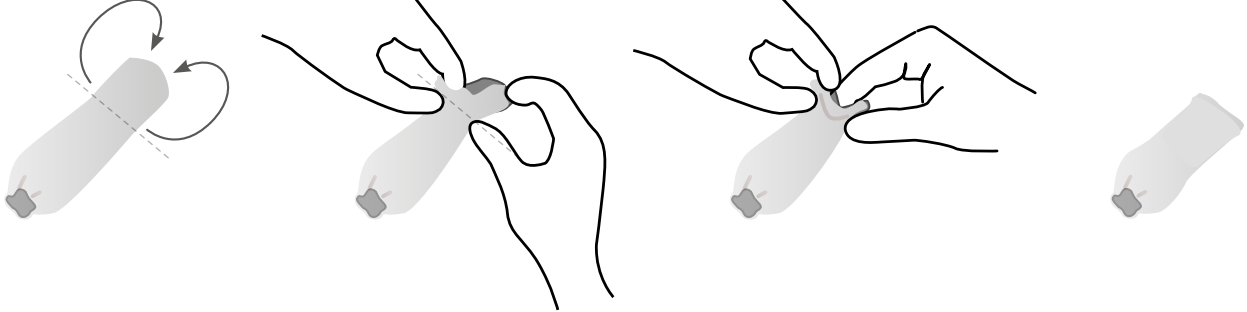
1



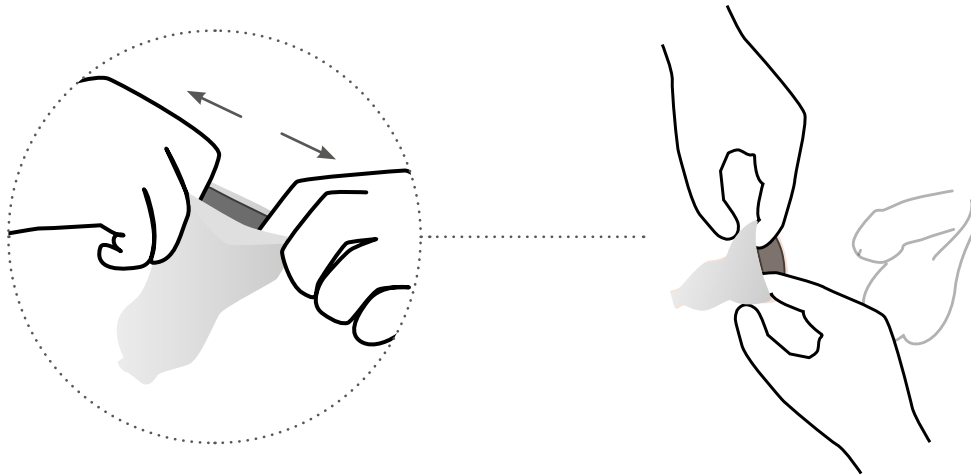
2



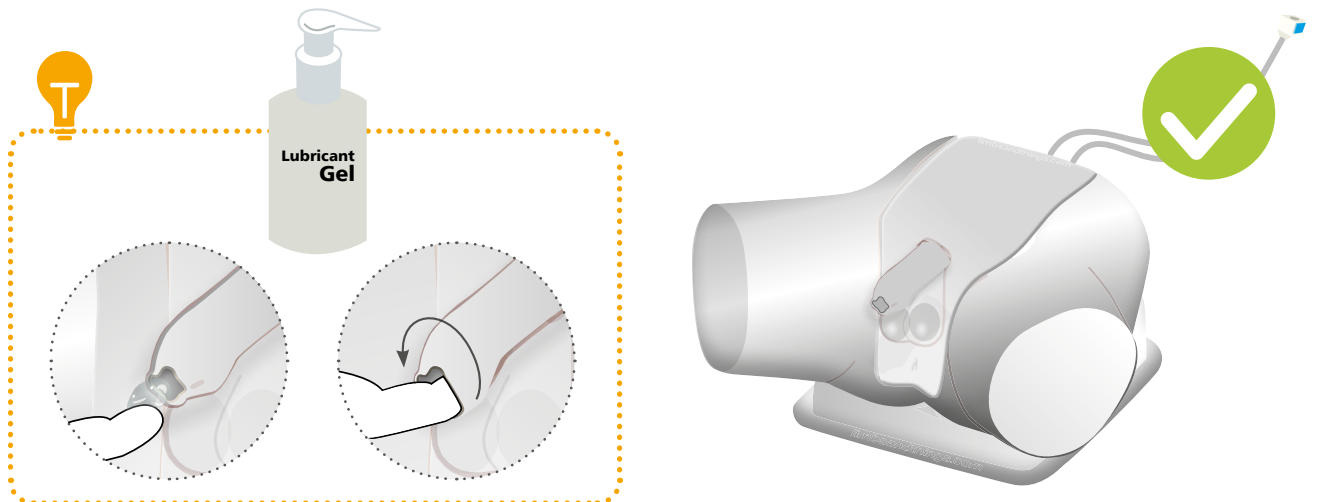
1



2

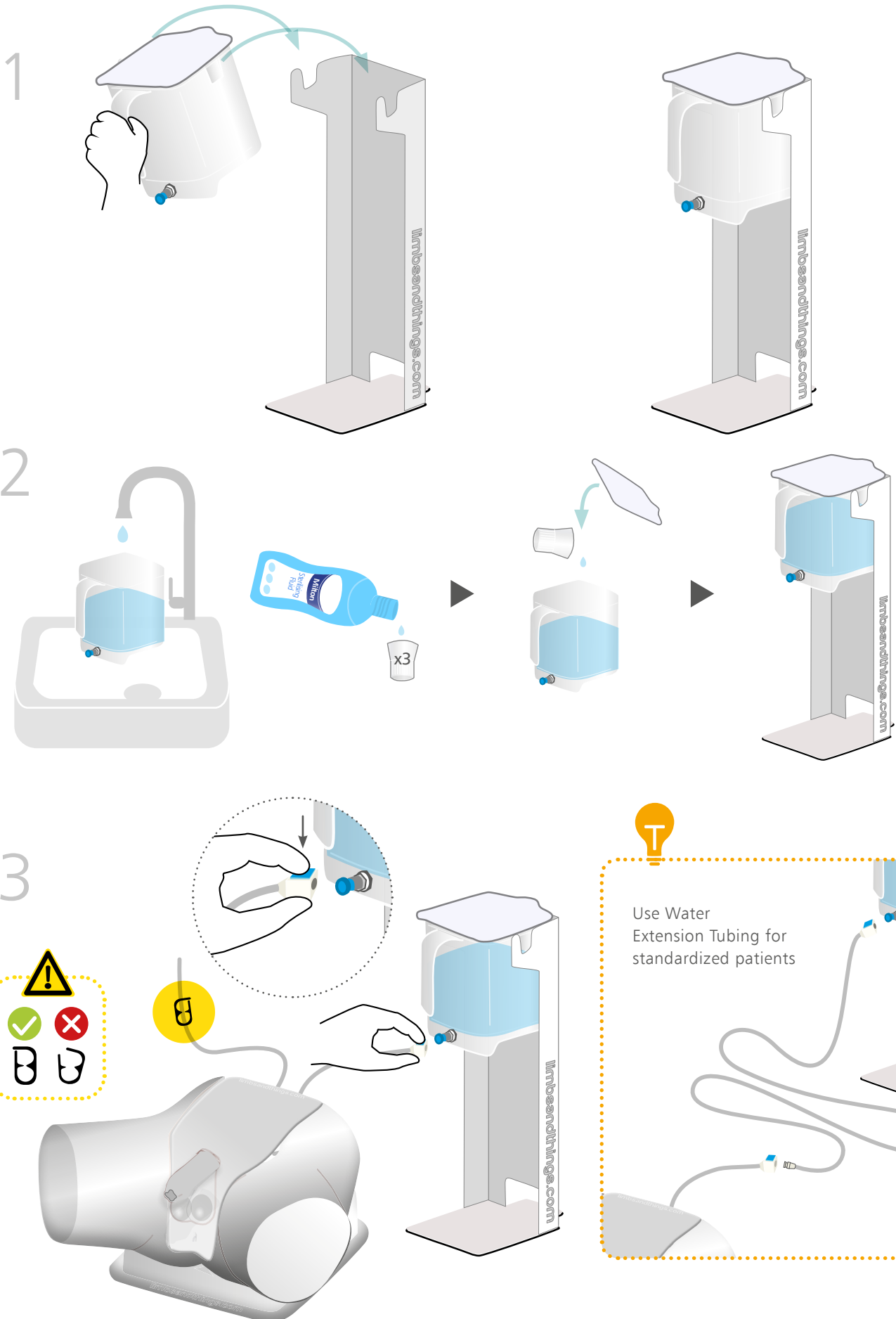


3



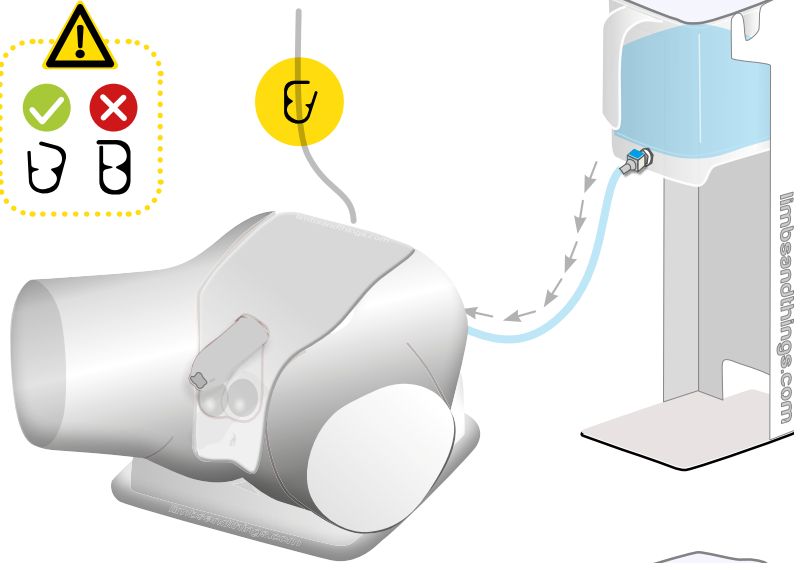
## SET UP

### ASSEMBLING THE WATER SYSTEM

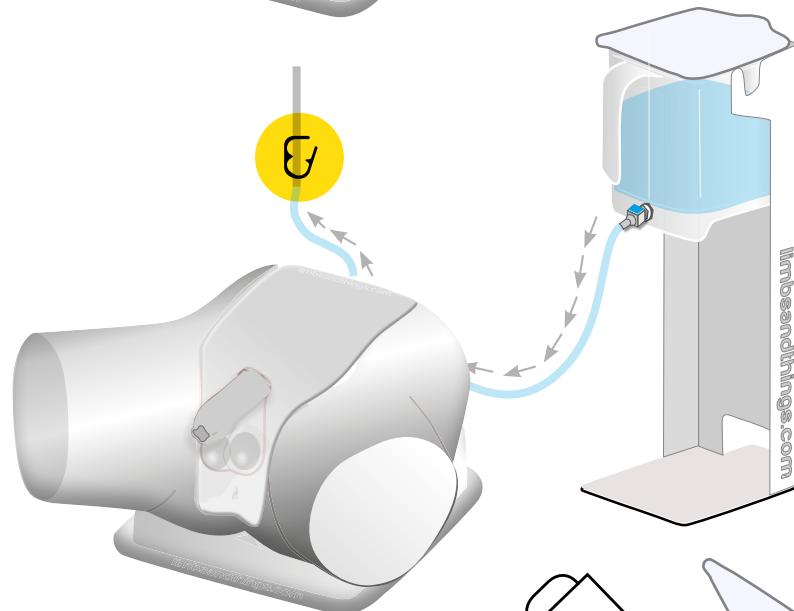




4



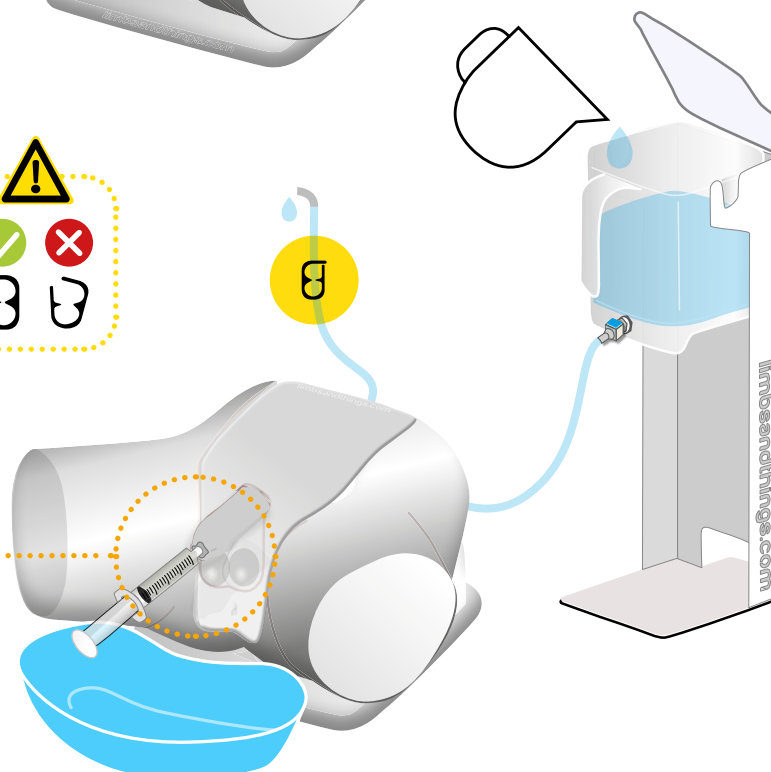
5



6



10ml during set up.  
5-10ml per catheter  
insertion

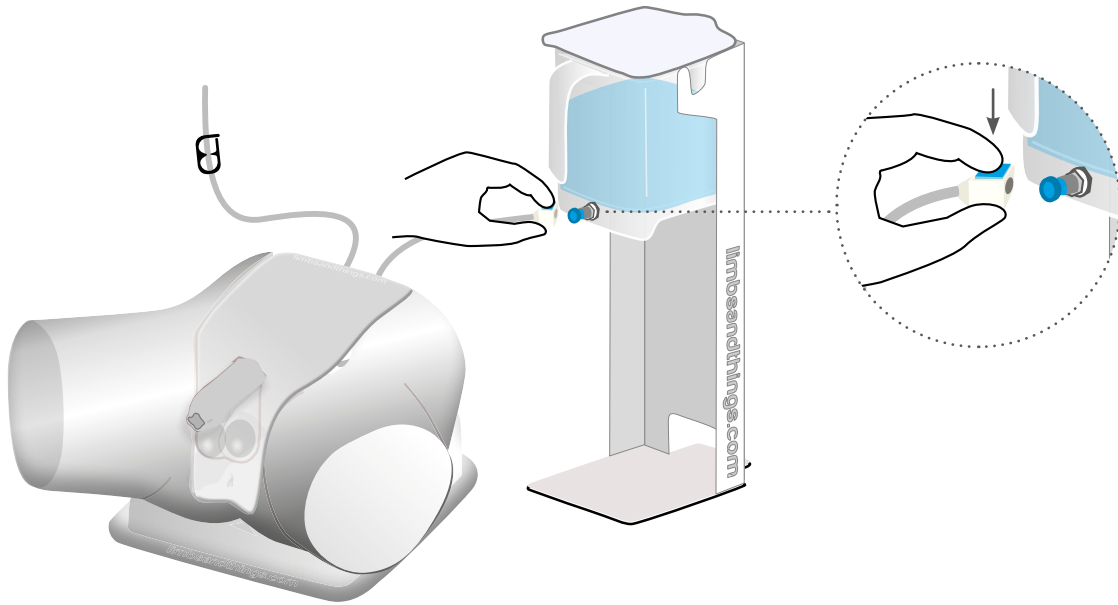


Keep water  
reservoir topped up

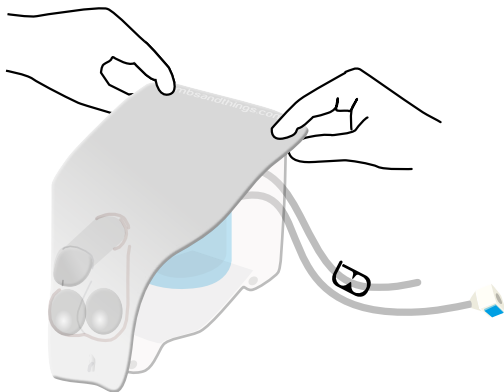
## SET UP

## EMPTYING WATER

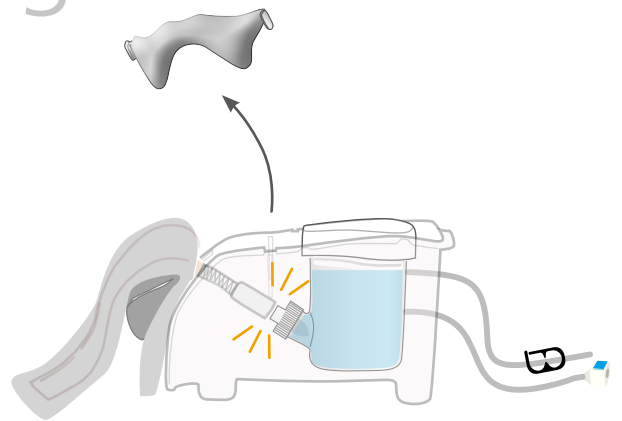
1



2



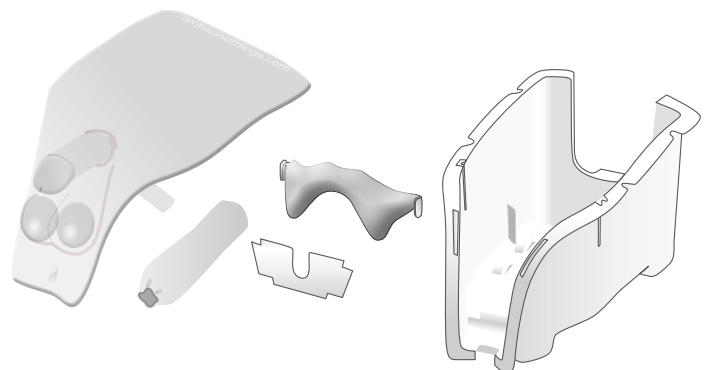
3



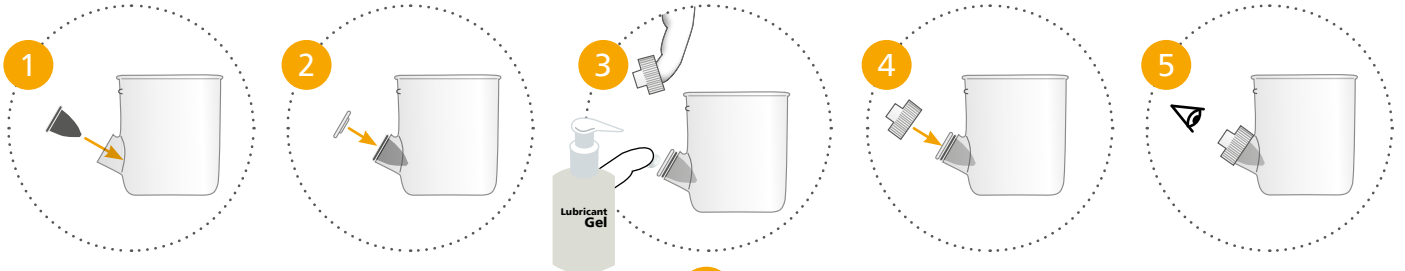
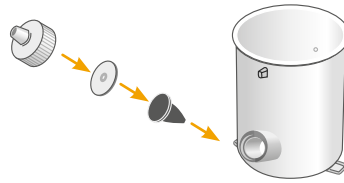
4



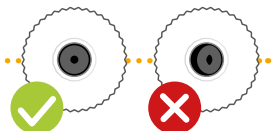
Dry all parts with paper towel  
Reassemble and put in box



1

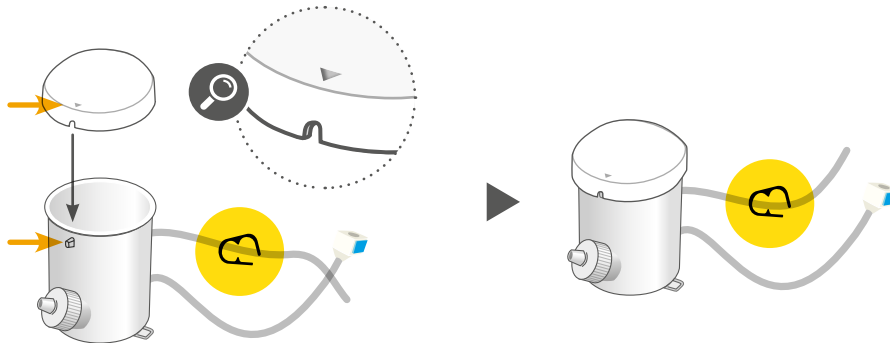


Add lubrication to diaphragm  
before replacing lid

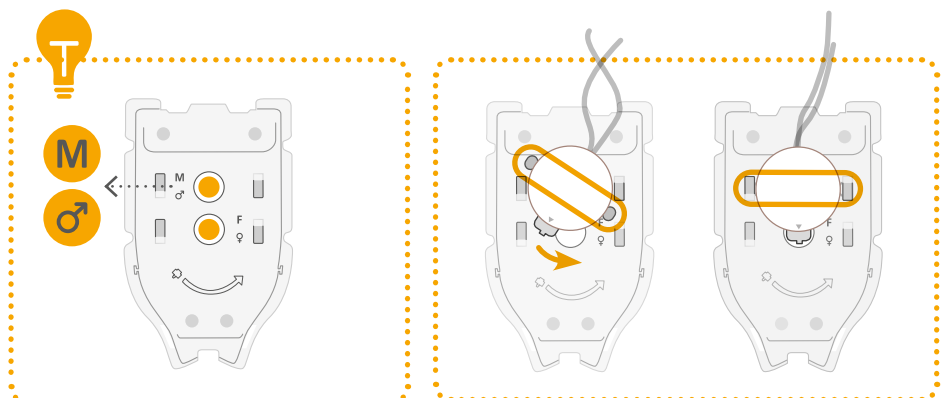
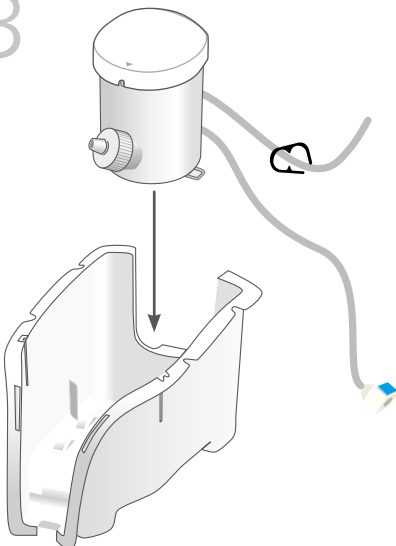


The parts should line  
up so that you can  
visualize the hole in  
the center

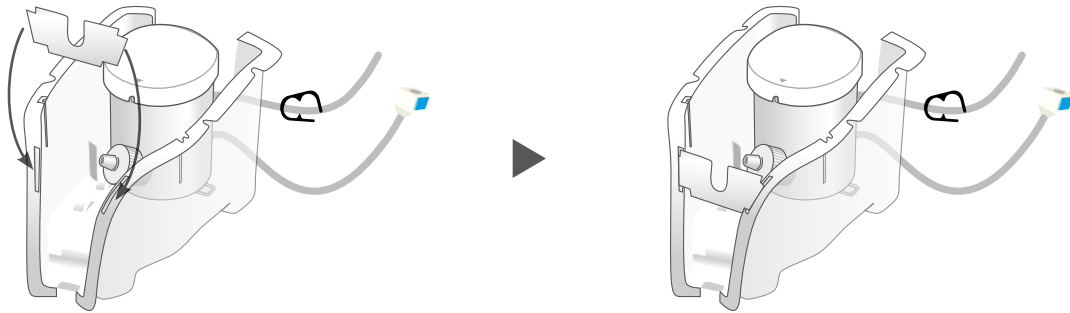
2



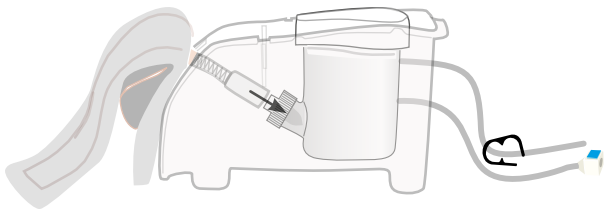
3



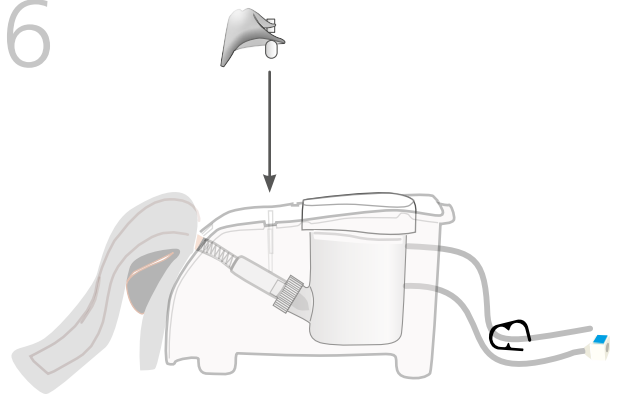
4



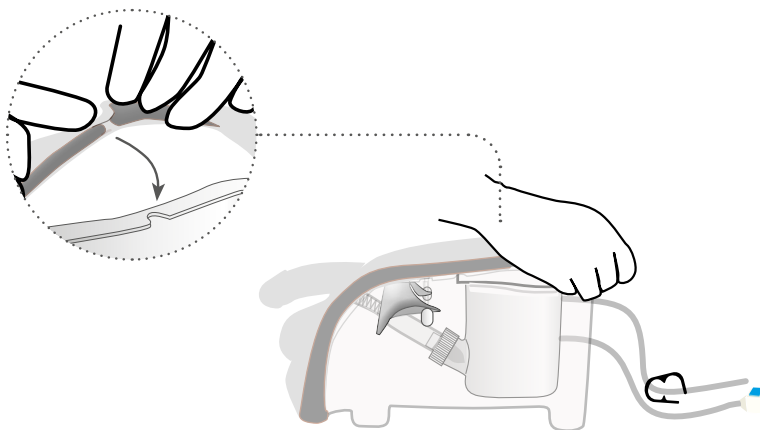
5



6



7





## AUGMENTED REALITY TRAINING (ART)

for your Catheterization Trainer

## SAFETY & CLEANING INSTRUCTIONS

Read the safety instructions  
carefully before using your  
ART Mat

### DO's



Follow all instructions.  
Keep these instructions.  
Pay attention to all warnings

Use mat on flat surface



Only use attachments/accessories  
specified by Limbs & Things

Refer all servicing to qualified service  
personnel. Servicing is required when  
the apparatus has been damaged



### DON'Ts



Do not install near any heat sources,  
the product to flames or use near  
naked flame sources.  
Do not use flammable solvents near  
or on this product

Do not set up the product near  
electrical appliances or items  
damaged by water



Do not cover the graphic of the mat  
with other items

Do not move the mat with a  
model on top of it



### STORAGE



Store rolled up with print on the  
outside



Don't fold



Don't place heavy objects on top

### CLEANING



Can be cleaned with water, soap, and  
non-alcoholic cleaning agents



Avoid abrasive and  
alcoholic cleaning agents

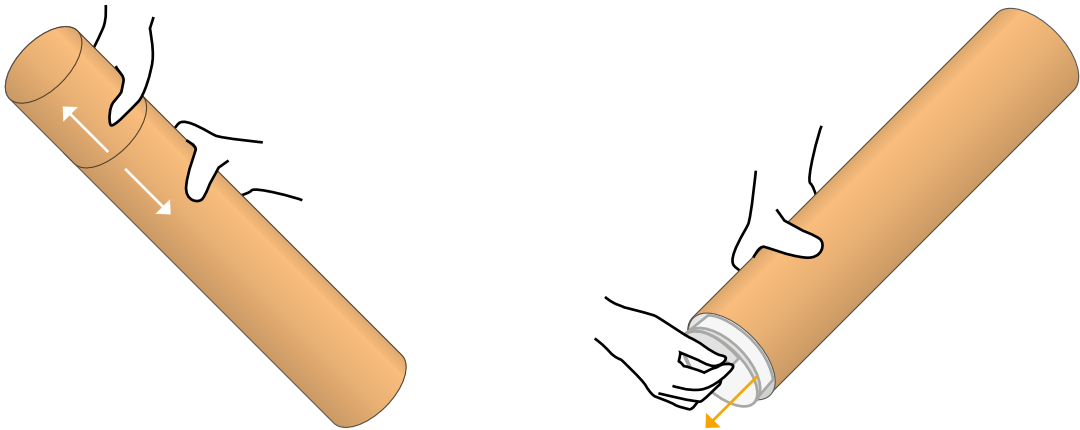


Make sure mat is dry before storing

## ART SET UP

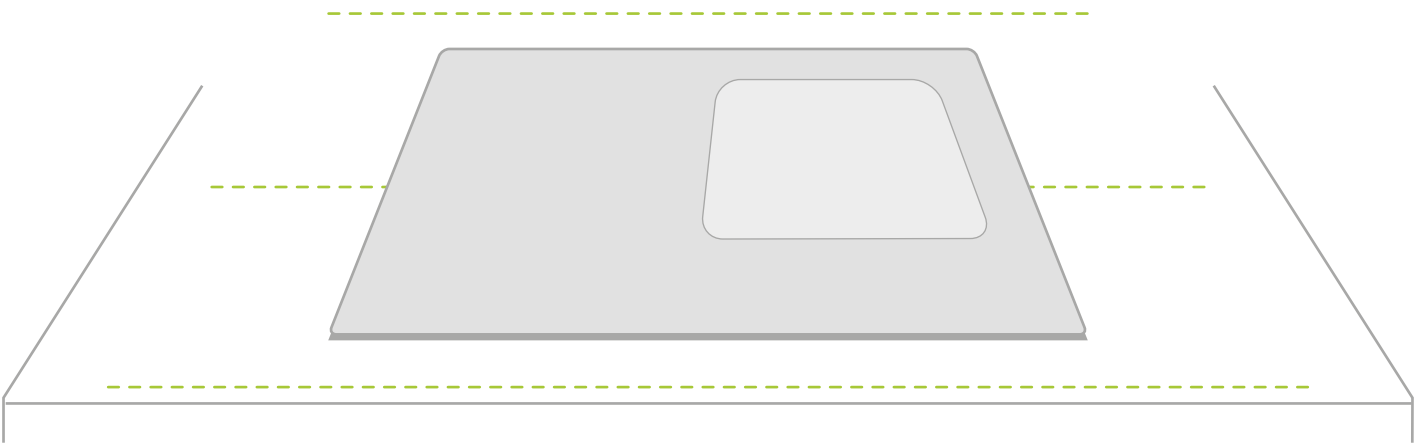
1

Take the mat out of tube



2

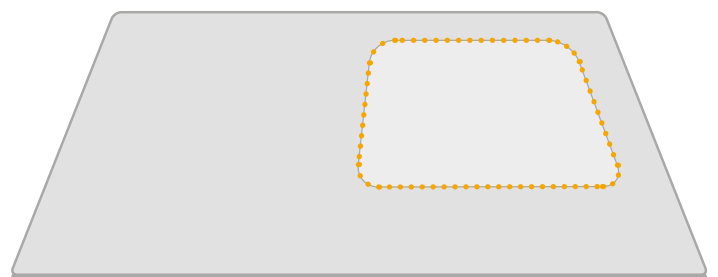
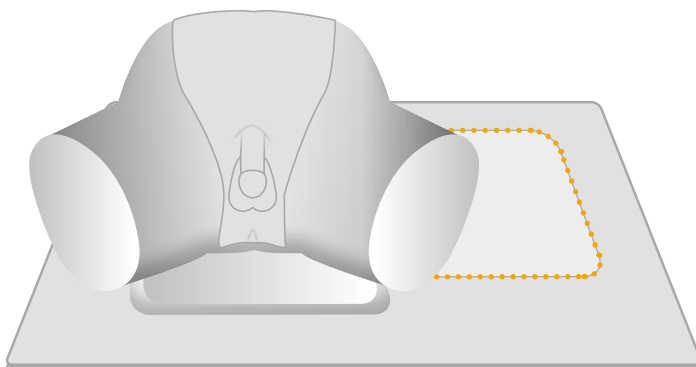
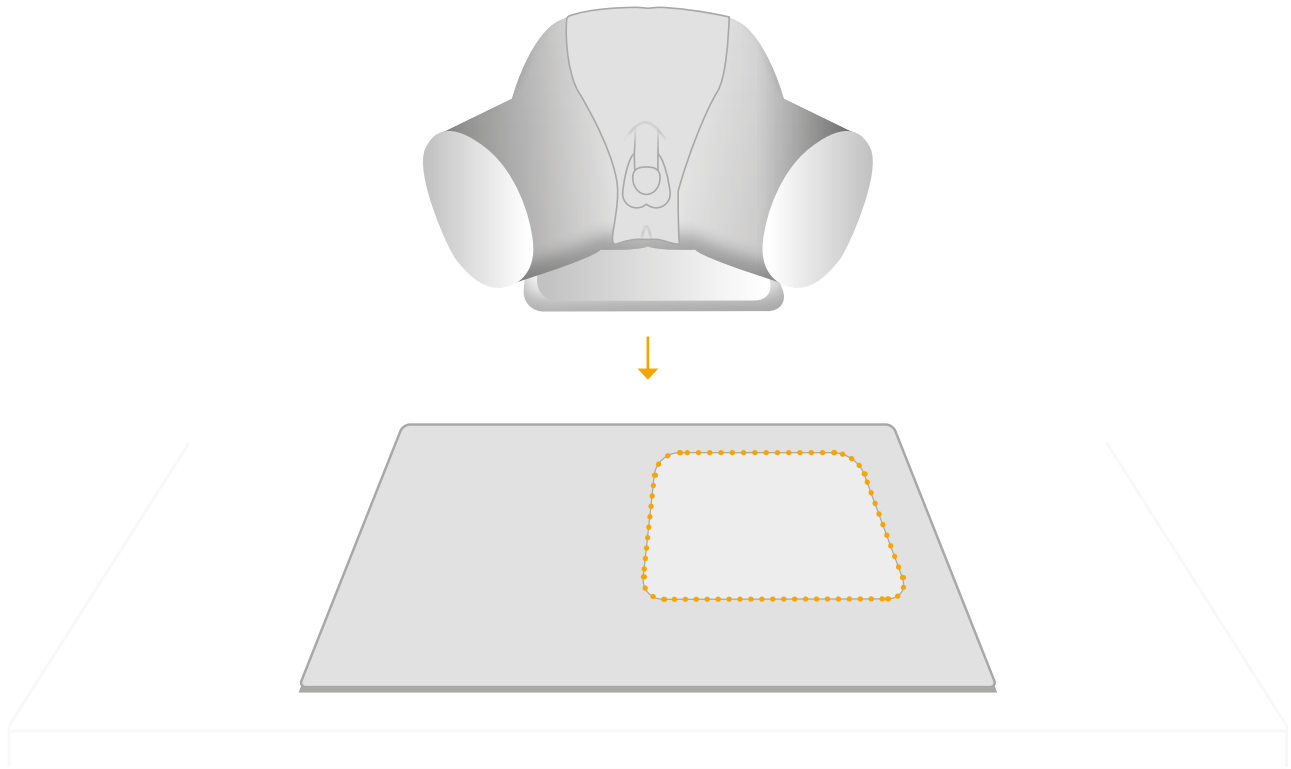
Place the mat on a table



Note: Diagrams are for illustrative purposes, your product may differ from the example shown

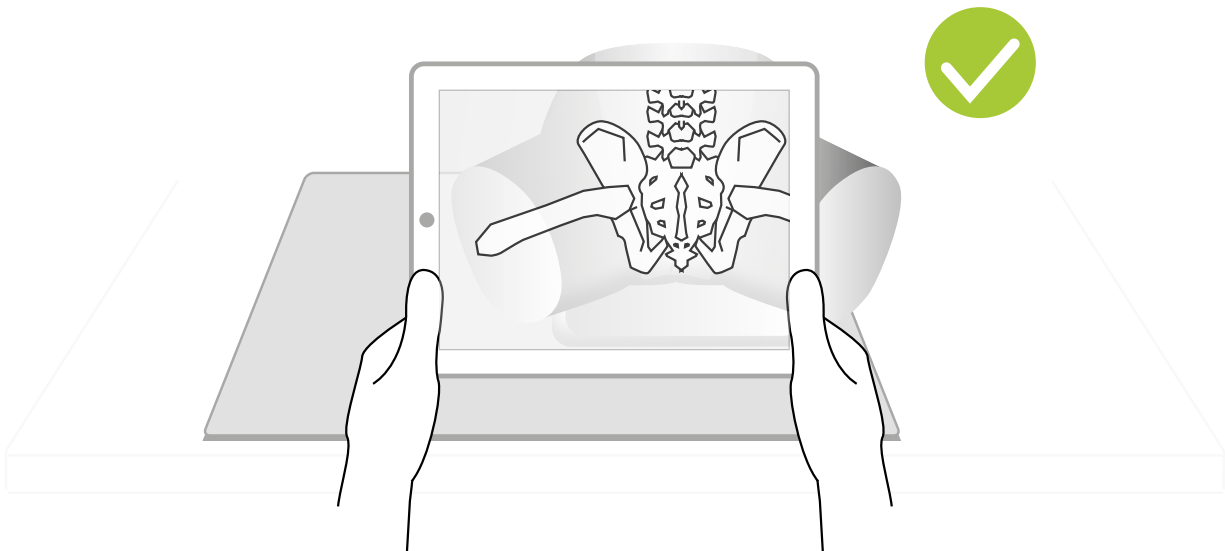
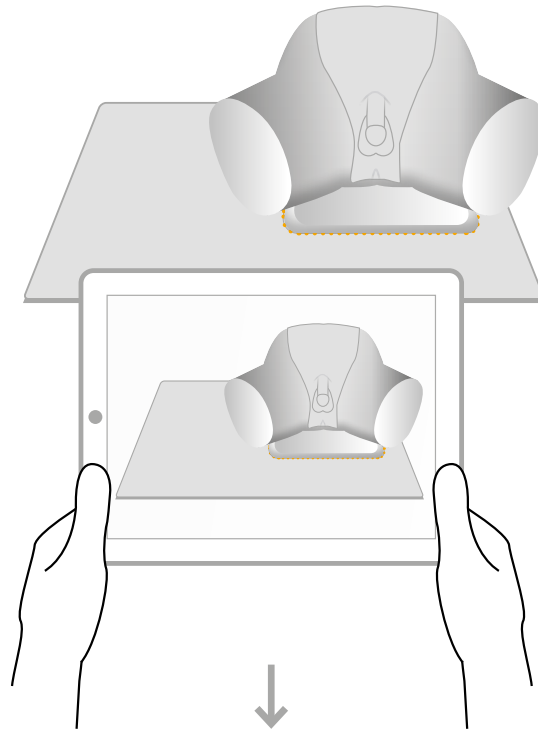
3

Place the model on the designated area of the mat



Note: Diagrams are for illustrative purposes, your product may differ from the example shown

Use the A.R.T. app to scan the mat



For app troubleshooting please visit the website.

Note: Diagrams are for illustrative purposes, your product may differ from the example shown

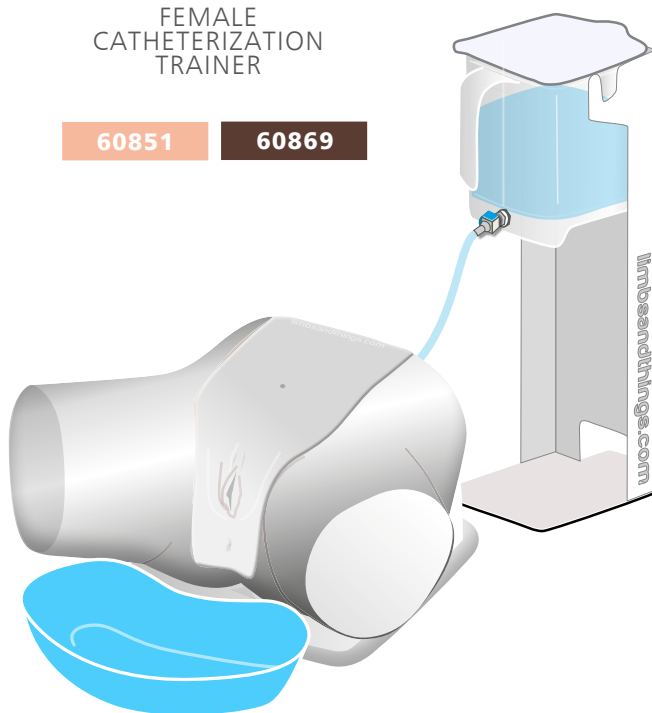


YOU MAY  
ALSO BE  
INTERESTED IN...

FEMALE  
CATHETERIZATION  
TRAINER

60851

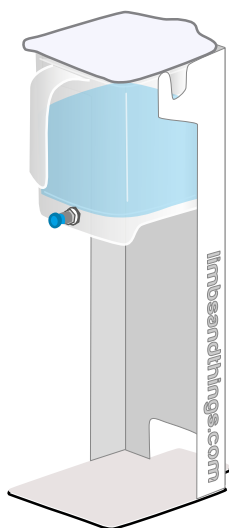
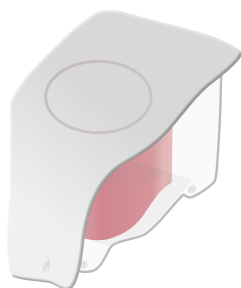
60869



SUPRAPUBIC  
INSERTION UNIT

60852

60873



MEDIUM  
CARRY CASE

40209



limbs&  
things

Part No: 965-508

Issue 07, May 2025

© 2025 Limbs & Things



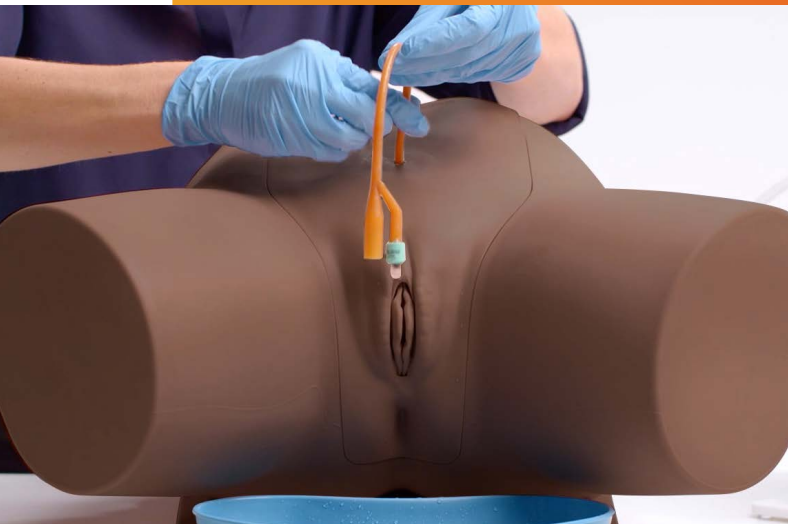
FM 818255



## USER GUIDE



# FEMALE CATHETERIZATION TRAINER



This product is available  
in light and dark skin tones

**60851**

**60869**

FOR MORE SKILLS TRAINING PRODUCTS VISIT

**[limbsandthings.com](https://limbsandthings.com)**

Sussex Street, St Philips, Bristol, BS2 0RA, UK | [sales@limbsandthings.com](mailto:sales@limbsandthings.com) | +44 (0) 117 311 0500

PACKAGE SUPPLIED	3
SAFETY & CLEANING INSTRUCTIONS	4
SET UP	5
• PLACING PELVIC SHELL	5
• ASSEMBLING THE WATER SYSTEM	6
• EMPTYING WATER	8
• REASSEMBLY	9
AUGMENTED REALITY TRAINING (ART)	12
• SAFETY & CLEANING INSTRUCTIONS	12
• ART SET UP	13

TAKE A LOOK  
AT OUR **VIDEO**



VISIT THE WEBSITE  
**[limbsandthings.com](http://limbsandthings.com)**

OR YOUTUBE CHANNEL  
**[youtube.com/limbsandthings](https://youtube.com/limbsandthings)**

## PACKAGE SUPPLIED

Female Catheterization Module

60856

60875



Water System

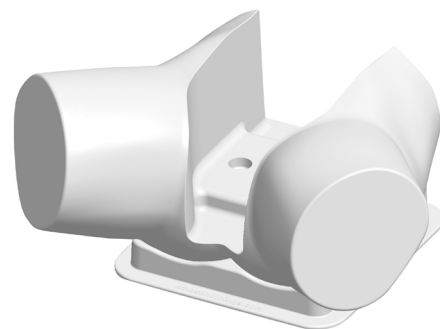
60893



Pelvic Shell & Stand

60864

60881



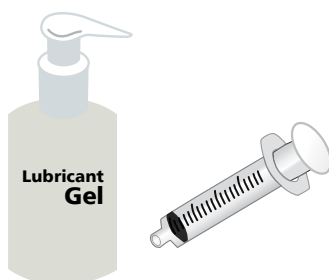
Aseptic Catheterization Sleeves (x2)

60862



Lubricant Gel with Syringe

60892



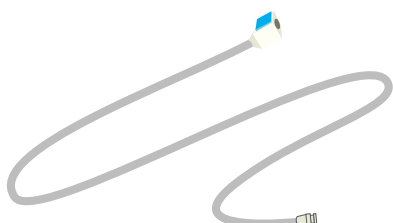
Antifungal Agent (Milton)

50185



Water Extension Tubing

60867



14 French Foley Catheter

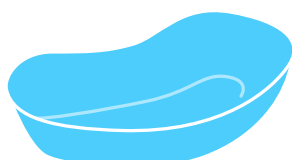


Lubricant Gel Sachet

027-113

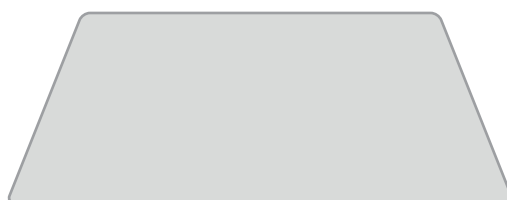
Lubricant Gel

Plastic Kidney Dish



ART mat

60131



## SAFETY & CLEANING INSTRUCTIONS

READ THE SAFETY INSTRUCTIONS CAREFULLY BEFORE USING YOUR CATHETERIZATION TRAINER

### DO's



Follow all instructions.  
Keep these instructions.  
Pay attention to all warnings.

Only use attachments/accessories specified by Limbs & Things.



Refer all servicing to qualified service personnel. Servicing is required when the apparatus has been damaged.

Wear gloves at all times and remove all jewellery items. Sharp surfaces such as finger nails and rings can lead to damage of silicone parts.



Use lubrication when inserting catheter.

Use only the Milton Antifungal agent supplied to sterilize water.



Use 14 French Foley catheter (male length).

Drain all water from the product and clean with a damp, soft cloth or sponge, using only warm water with mild detergent.



### DON'Ts



Do not install near any heat sources, do not expose the product to flames or use near naked flame sources. Do not use flammable solvents near or on this product.

Do not set up the product near electrical appliances or items damaged by water.



Do not leave catheters inserted in the Trainer.

Do not attempt to remove a catheter which has an inflated balloon.



Do not use anaesthetic gel – use mock gel supplied with trainer.

Do not disassemble the product or attempt to repair a faulty unit. Please return the product to Limbs & Things for assessment and repair.



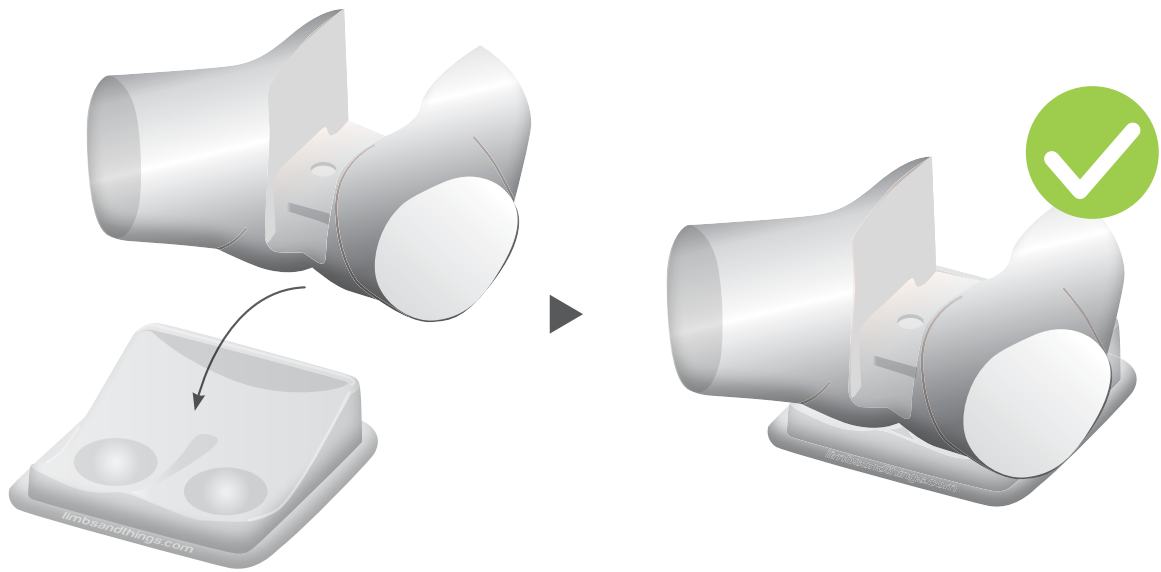
Do not leave trainer set up with water in. Disassemble & clean after every use.

### STORAGE & TRANSPORTATION

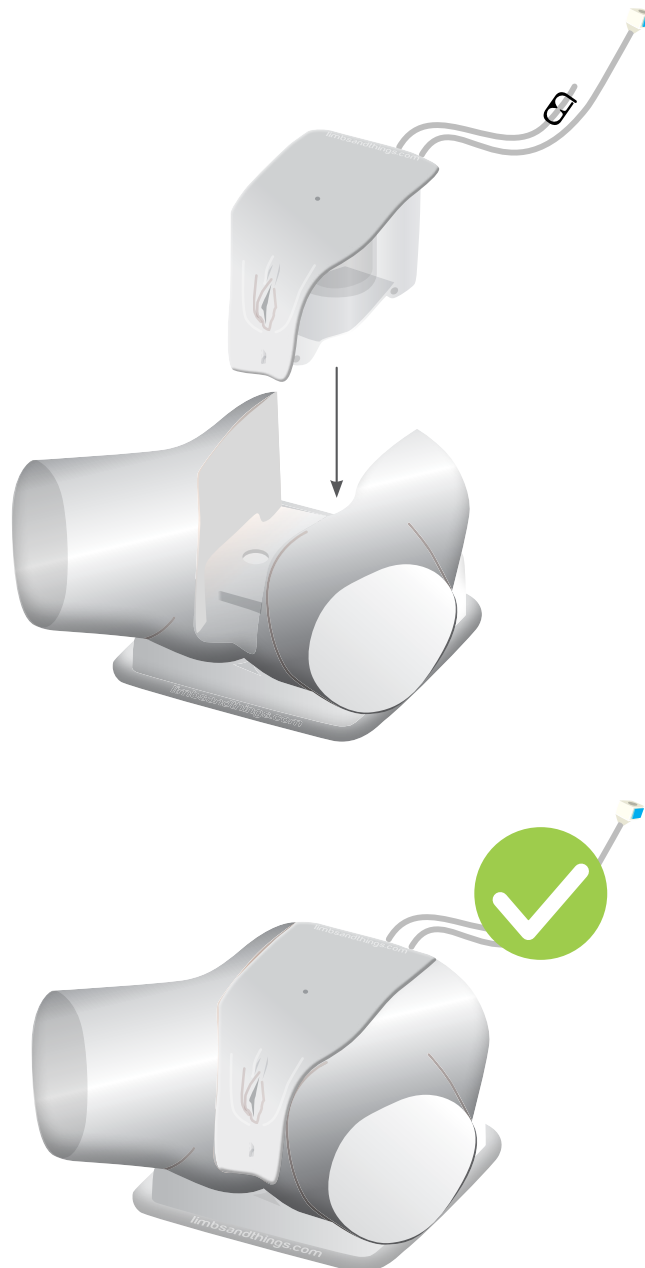


Always ensure that the product is properly packed and secured during transportation and storage in order to prevent personal injury or damage to the product.

1

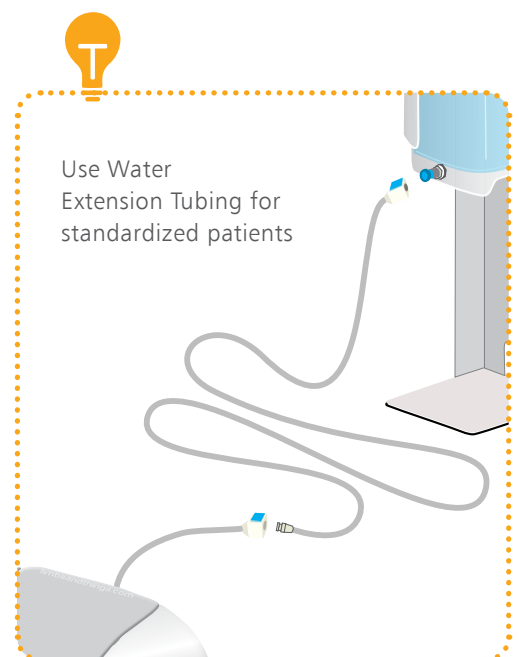
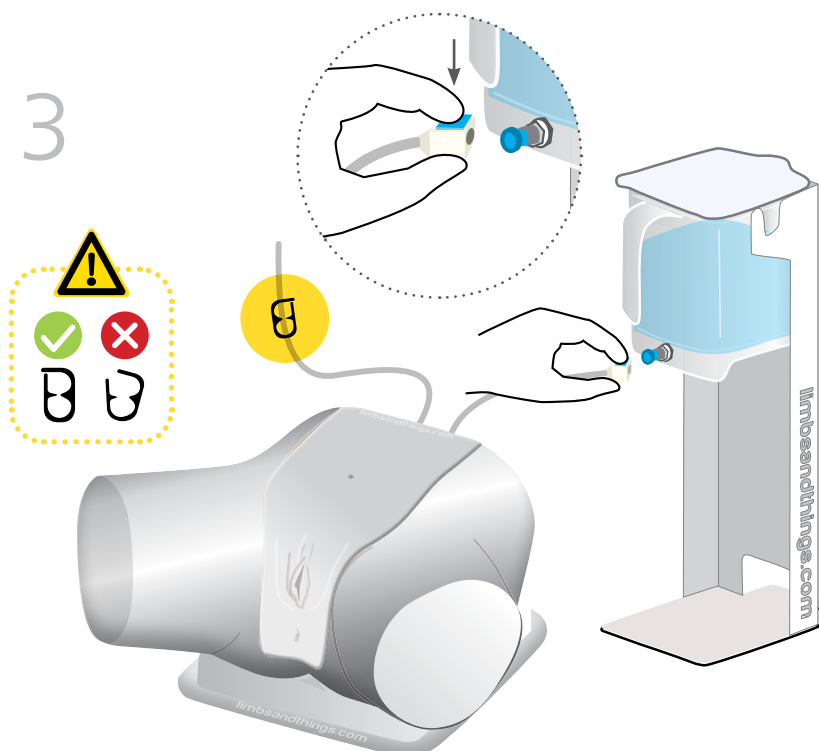
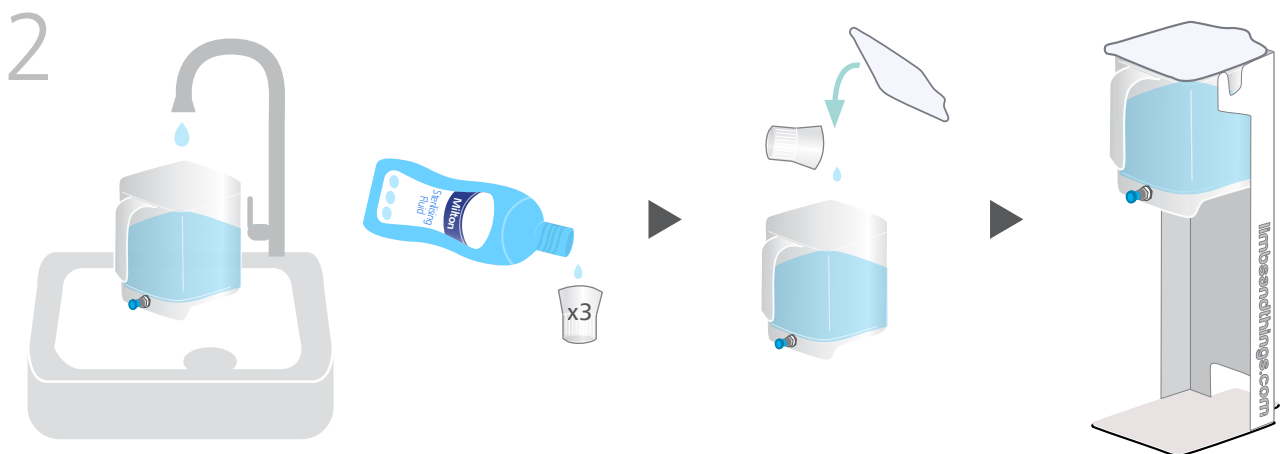
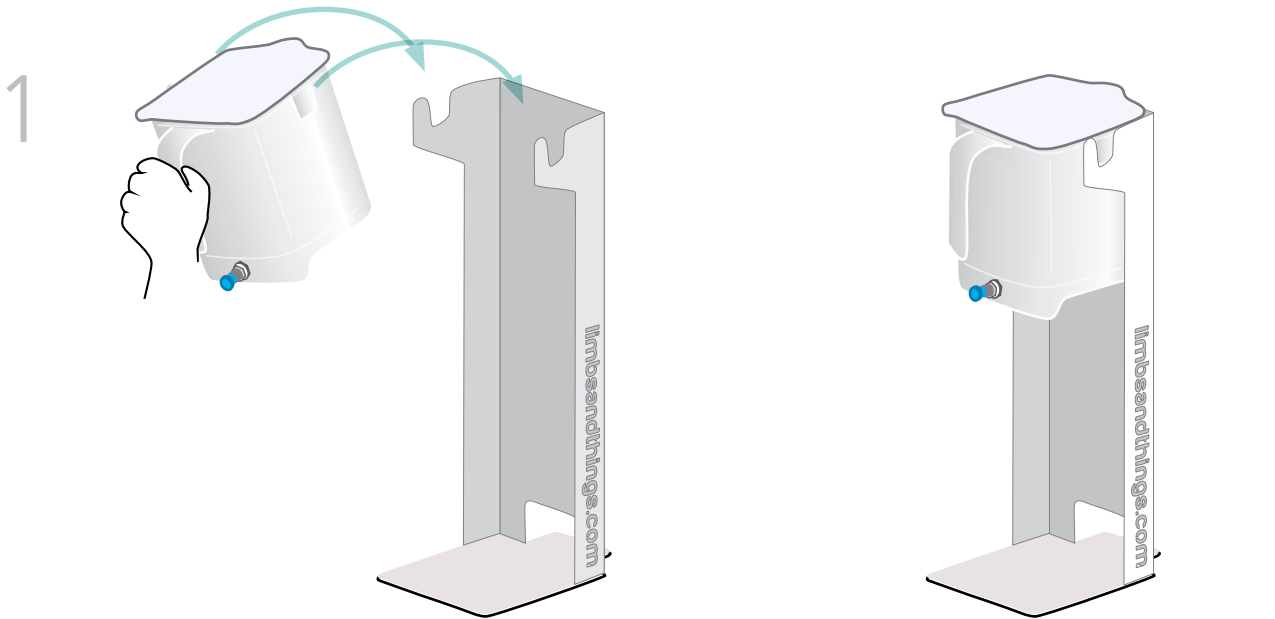


2

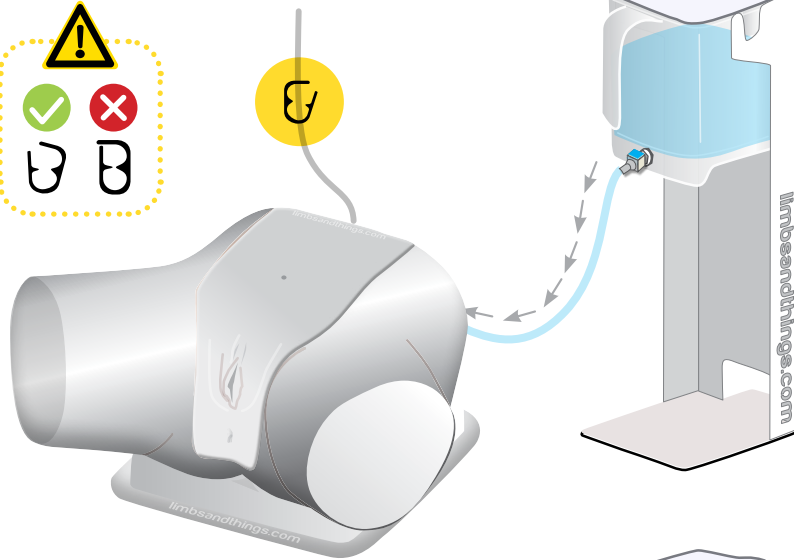


## SET UP

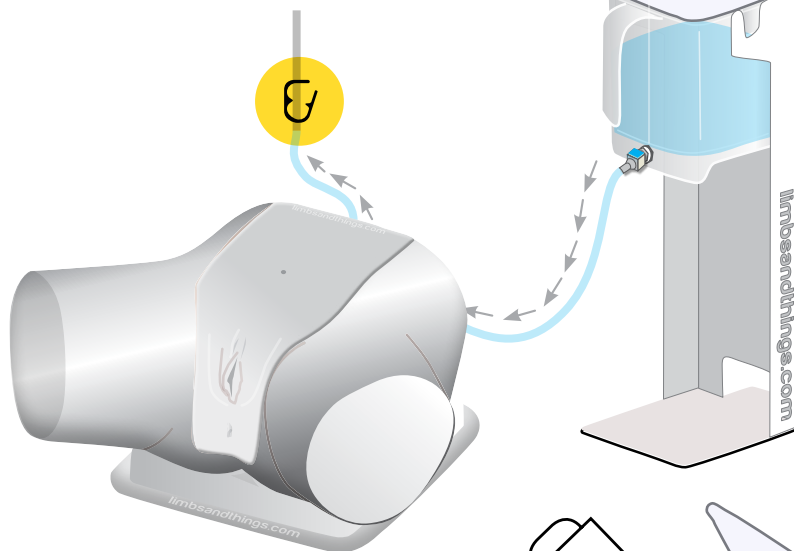
### ASSEMBLING THE WATER SYSTEM



4



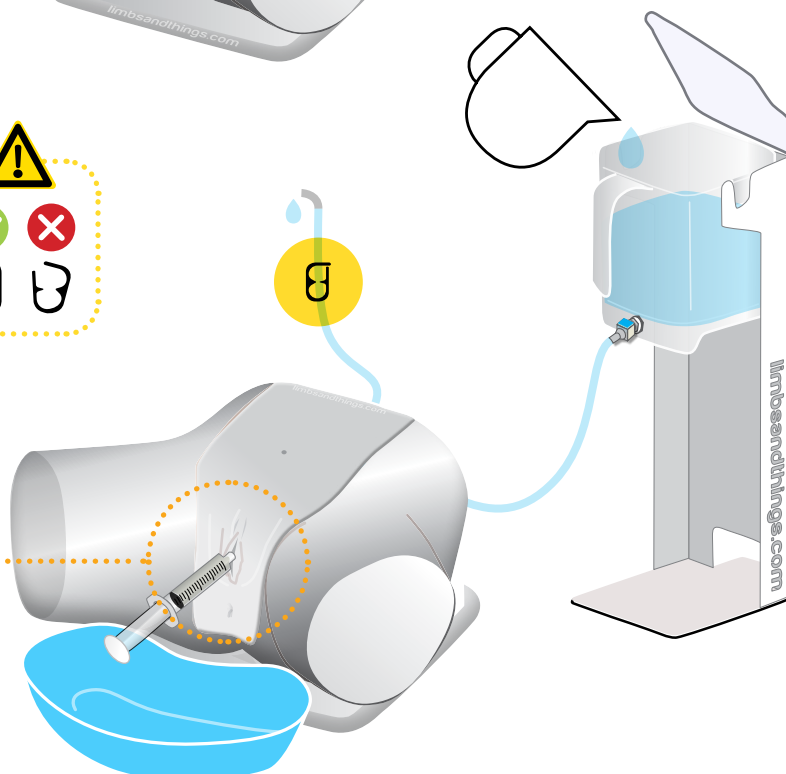
5



6



10ml during set up.  
5-10ml per catheter  
insertion



Keep water  
reservoir topped up

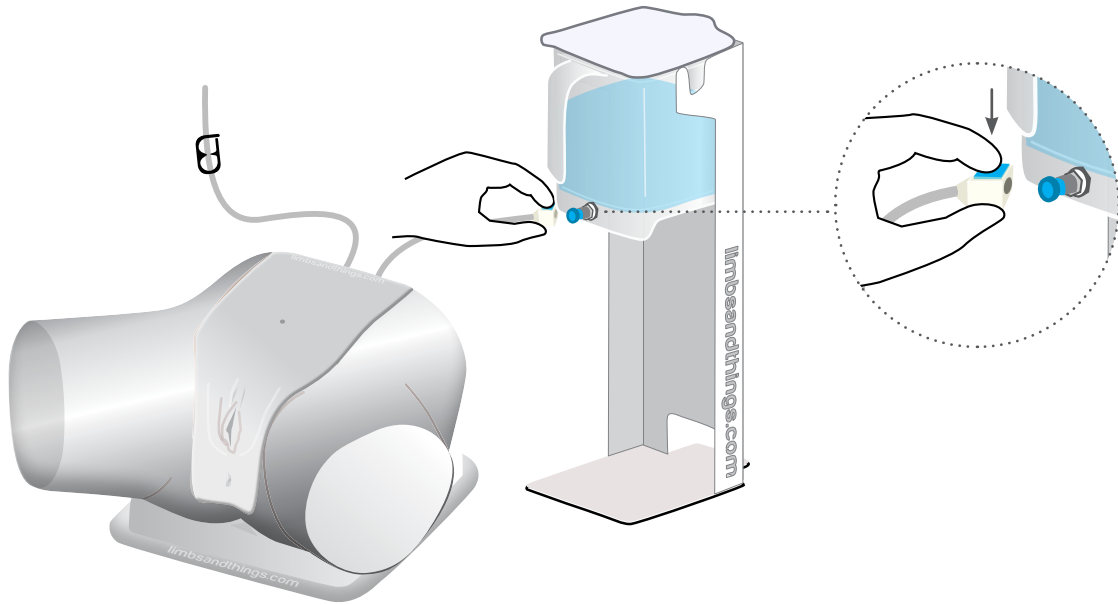




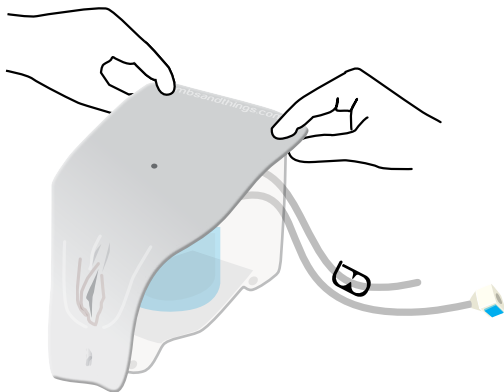
## SET UP

## EMPTYING WATER

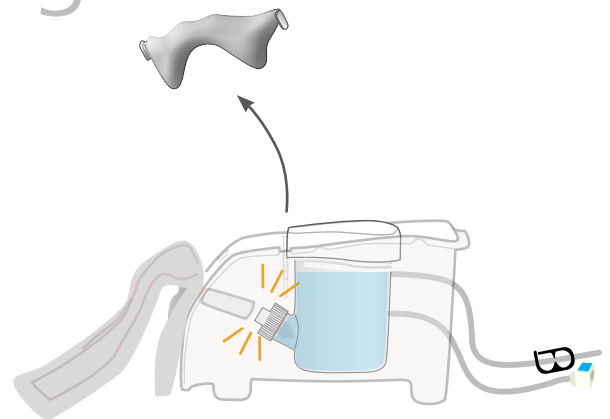
1



2



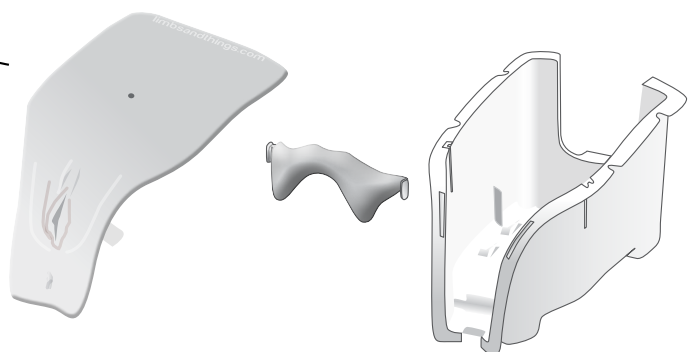
3



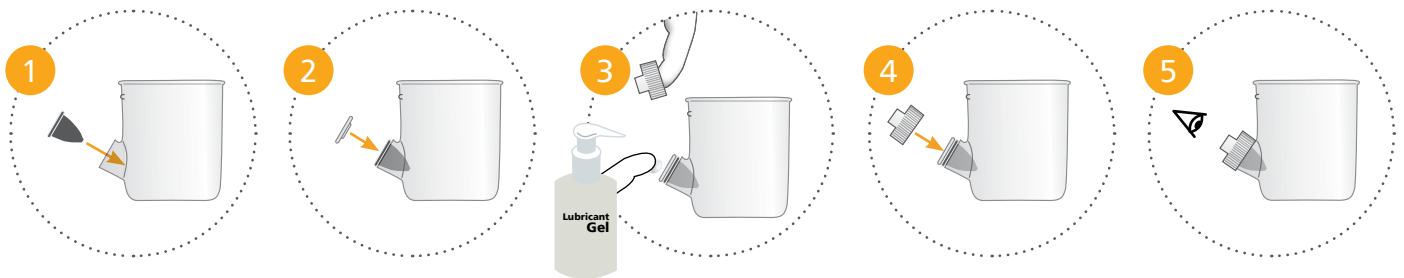
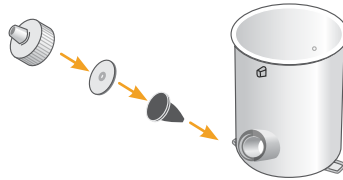
4



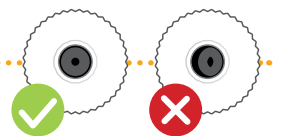
Dry all parts with paper towel  
Reassemble and put in box



1

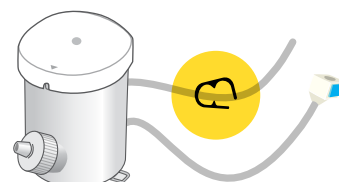
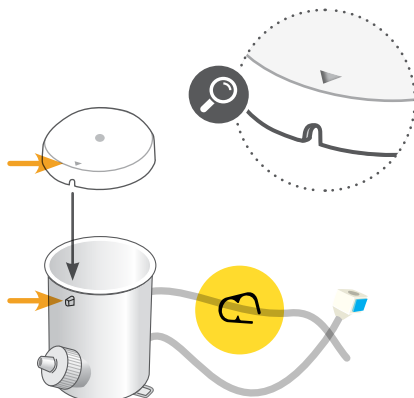


Add lubrication to diaphragm  
before replacing lid

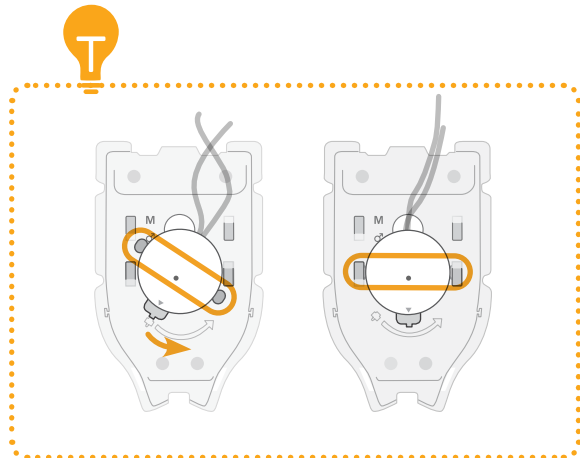
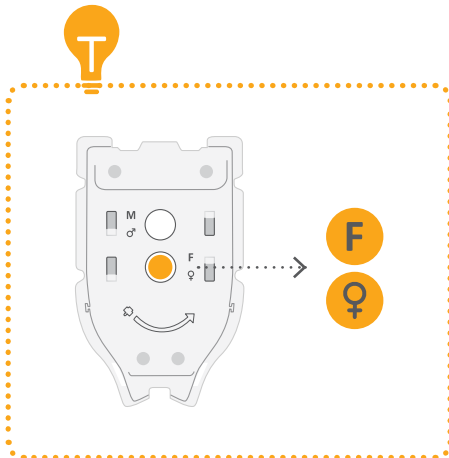
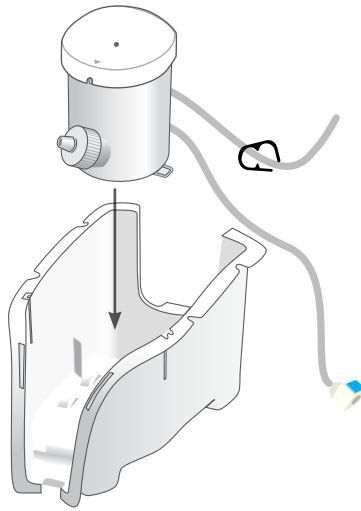


The parts should line  
up so that you can  
visualize the hole in  
the center

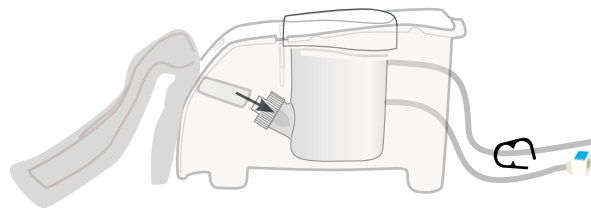
2



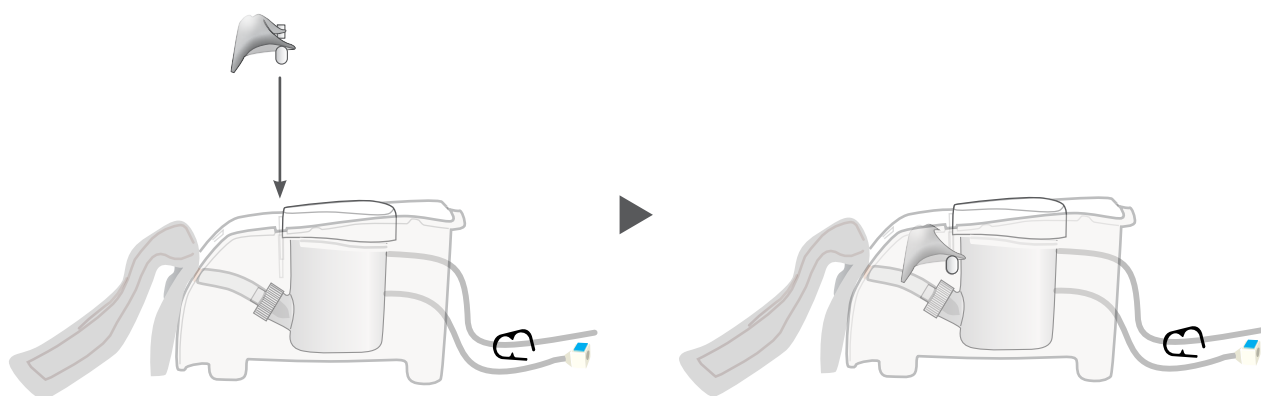
3



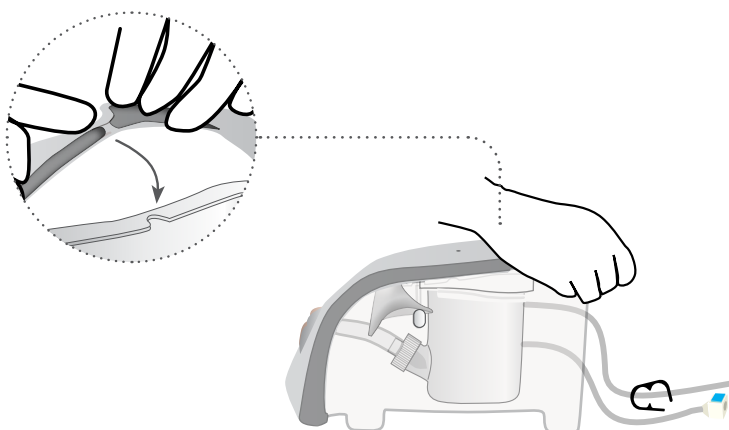
4



5



6





## AUGMENTED REALITY TRAINING (ART)

for your Catheterization Trainer

## SAFETY & CLEANING INSTRUCTIONS

Read the safety instructions  
carefully before using your  
ART Mat

### DO's



Follow all instructions.  
Keep these instructions.  
Pay attention to all warnings.

Use mat on flat surface



Only use attachments/accessories  
specified by Limbs & Things

Refer all servicing to qualified service  
personnel. Servicing is required when  
the apparatus has been damaged



### DON'Ts



Do not install near any heat sources,  
expose the product to flames or use  
near naked flame sources.  
Do not use flammable solvents near  
or on this product

Do not set up the product near  
electrical appliances or items  
damaged by water



Do not cover the graphic of the mat  
with other items

Do not move the mat with a  
model on top of it



### STORAGE



Store rolled up with print on the  
outside



Don't fold



Don't place heavy objects on top

### CLEANING



Can be cleaned with water, soap, and  
non-alcoholic cleaning agents



Avoid abrasive and  
alcoholic cleaning agents

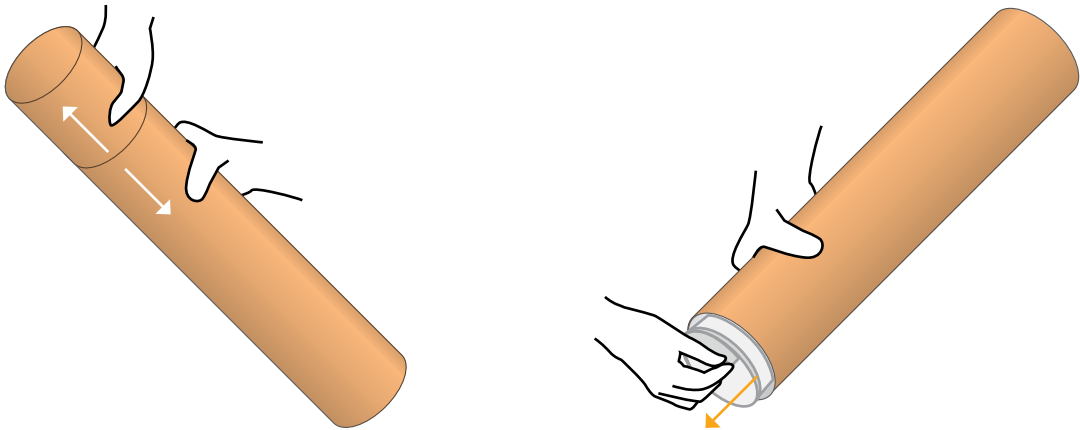


Make sure mat is dry before storing

## ART SET UP

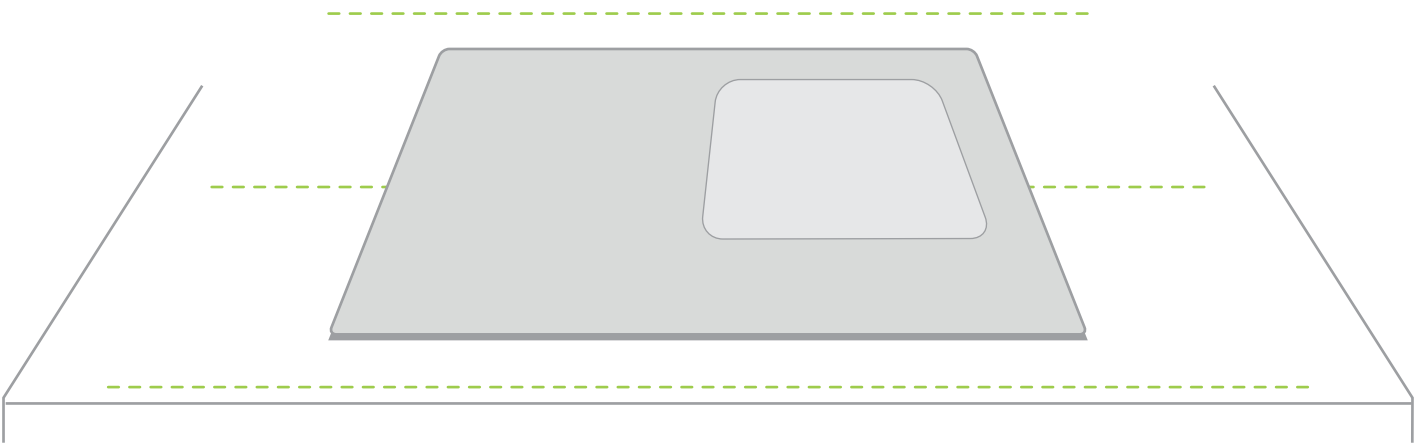
1

Take the mat out of tube



2

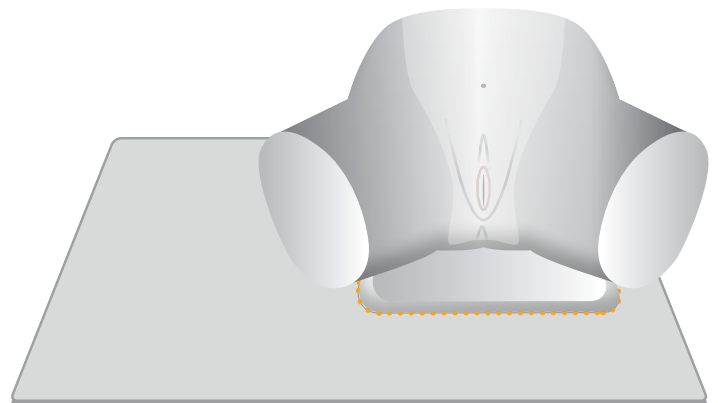
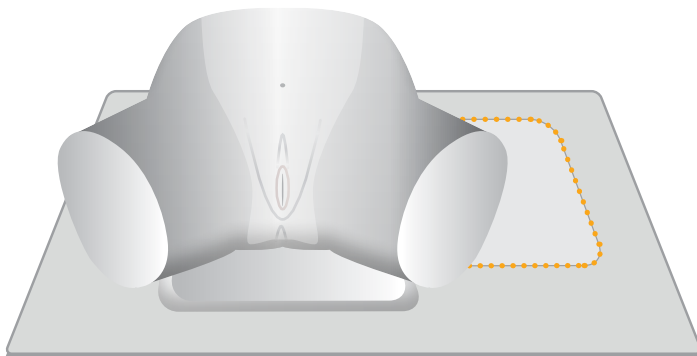
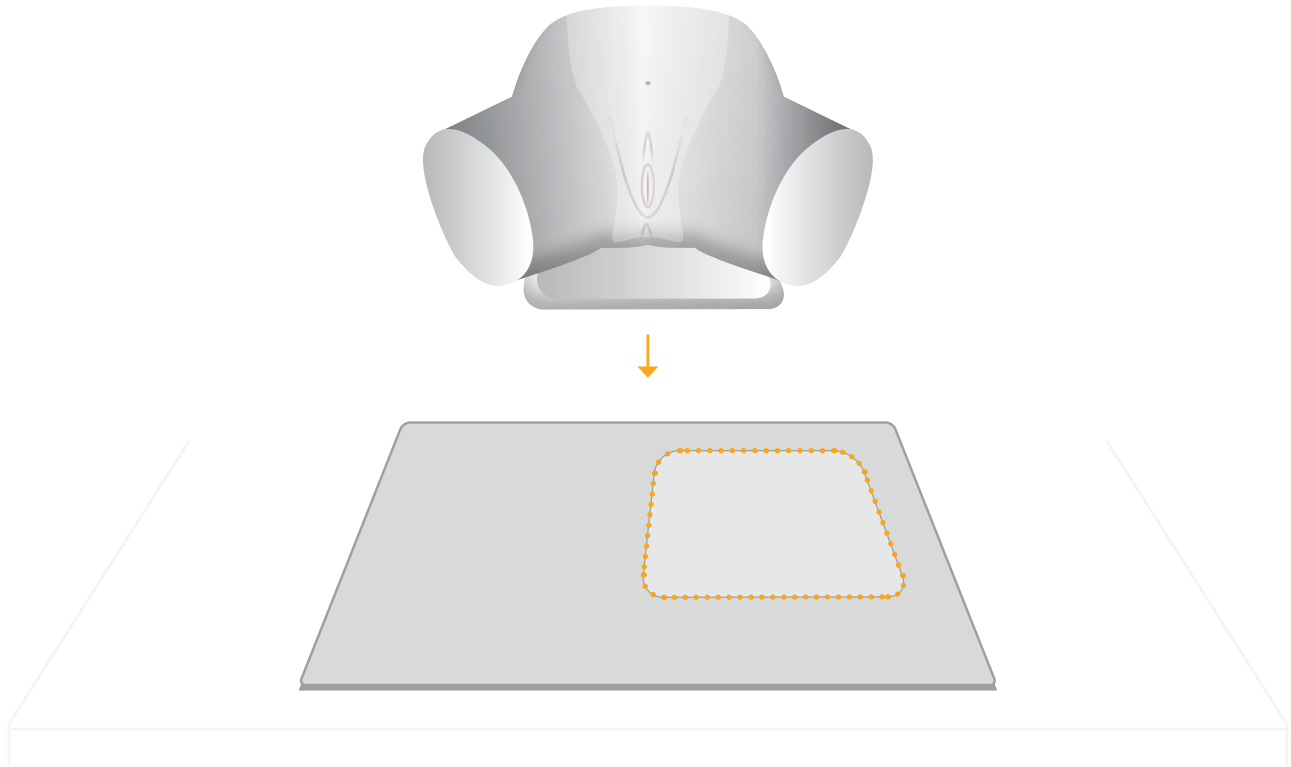
Place the mat on a table



Note: Diagrams are for illustrative purposes, your product may differ from the example shown

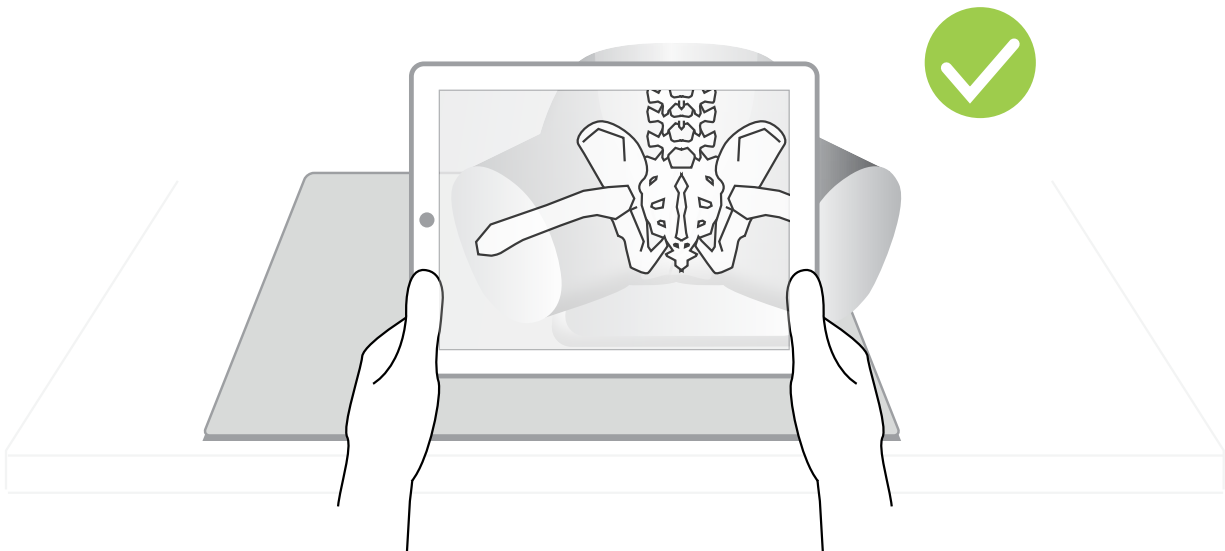
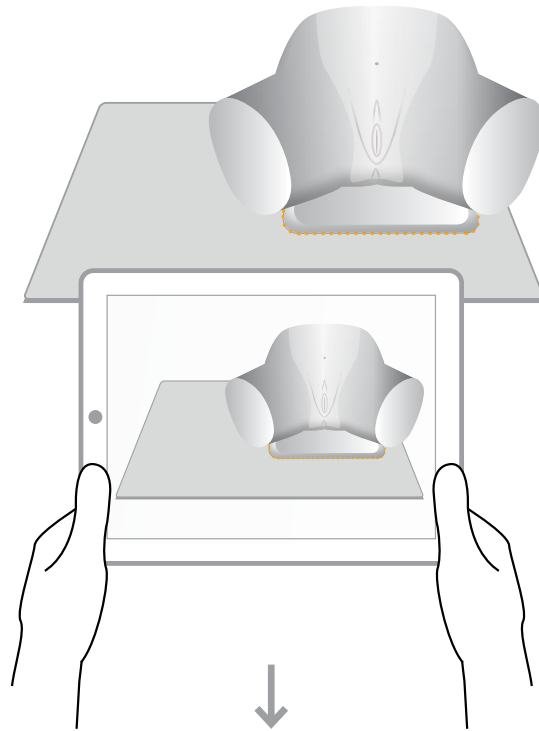
3

Place the model on the designated area of the mat



Note: Diagrams are for illustrative purposes, your product may differ from the example shown

Use the A.R.T. app to scan the mat



For app troubleshooting please visit the website.

Note: Diagrams are for illustrative purposes, your product may differ from the example shown

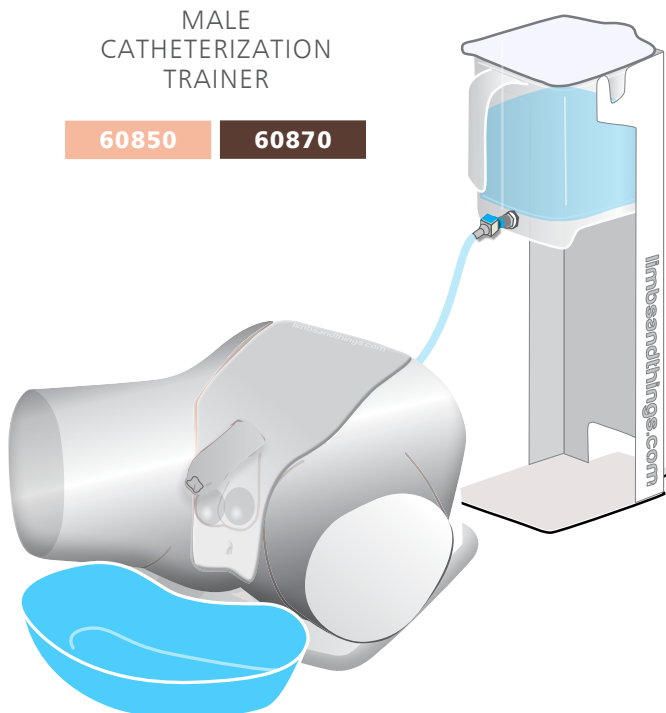


YOU MAY  
ALSO BE  
INTERESTED IN...

MALE  
CATHETERIZATION  
TRAINER

60850

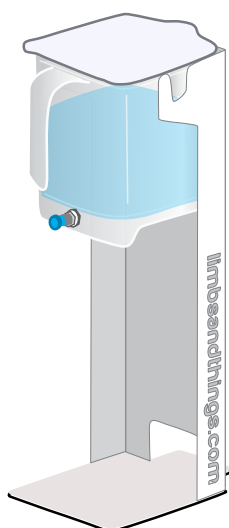
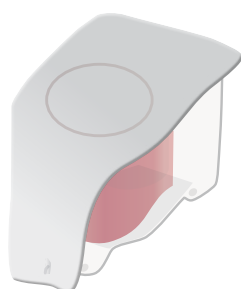
60870



SUPRAPUBIC  
INSERTION UNIT

60852

60873



MEDIUM  
CARRY CASE

40209



**limbs&  
things**

Part No: 965-509

Issue 07, May 2025

© 2025 Limbs & Things



FM 818255