



USER GUIDE



STANDARD CATHETERIZATION TRAINER SET

This product is available
in light and dark skin tones

60853

60871

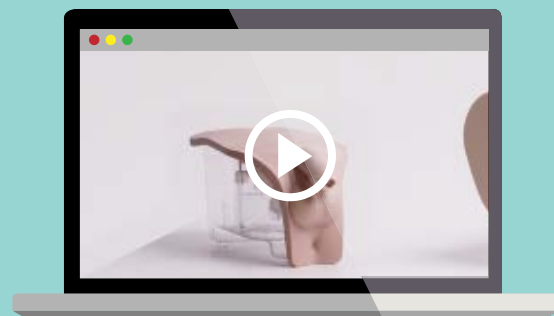
FOR MORE SKILLS TRAINING PRODUCTS VISIT

limbsandthings.com

Sussex Street, St Philips, Bristol, BS2 0RA, UK | sales@limbsandthings.com | +44 (0) 117 311 0500

PACKAGE SUPPLIED	3
SAFETY & CLEANING INSTRUCTIONS	4
SET UP	5
• PLACING PELVIC SHELL	5
• FITTING THE FORESKIN	6
• ASSEMBLING THE WATER SYSTEM	7
• EMPTYING WATER	9
• REASSEMBLY	10
AUGMENTED REALITY TRAINING (ART)	12
• SAFETY & CLEANING INSTRUCTIONS	12
• ART SET UP	13

TAKE A LOOK
AT OUR **VIDEO**



VISIT THE WEBSITE
limbsandthings.com

OR YOUTUBE CHANNEL
youtube.com/limbsandthings

PACKAGE SUPPLIED

Male Catheterization Module

60855

60874



Female Catheterization Module

60856

60875



Water System

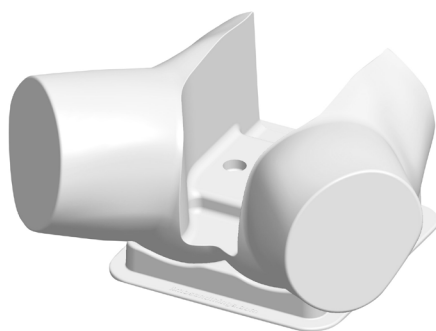
60893



Pelvic Shell & Stand

60864

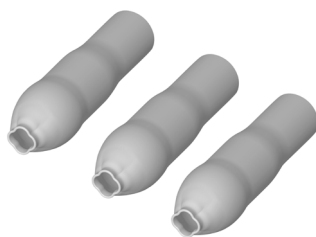
60881



Catheterization Foreskins (x3)

60859

60878



Aseptic Catheterization Sleeves (x2)

60862



Lubricant Gel with Syringe

60892



Antifungal Agent (Milton)

50185

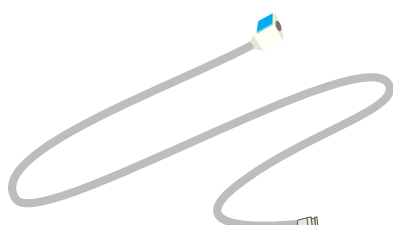


Plastic Kidney Dish



Water Extension Tubing

60867

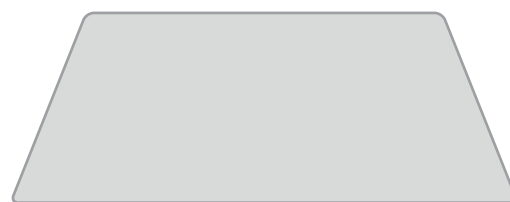


14 French Foley Catheter



ART mat

60131



SAFETY & CLEANING INSTRUCTIONS

READ THE SAFETY INSTRUCTIONS CAREFULLY
BEFORE USING YOUR CATHETERIZATION TRAINER

DO's



Follow all instructions.
Keep these instructions.
Heed all warnings.

Only use attachments/accessories
specified by Limbs & Things.



Refer all servicing to qualified service
personnel. Servicing is required when
the apparatus has been damaged.

Wear gloves at all times and remove
all jewellery items. Sharp surfaces such
as finger nails and rings can lead to
damage of silicone parts.



Use lubrication when inserting
catheter.

Use only the Milton Antifungal
agent supplied to sterilize water.



Use 14 French Foley catheter
(male length).

Drain all water from the product
and clean with a damp soft cloth
or sponge, using only warm water
with mild detergent.



DON'Ts



Do not install near any heat sources,
do not expose the product to flames
or use near naked flame sources.
Do not use flammable solvents near
or on this product.

Do not set up the product near
electrical appliances or items
damaged by water.



Do not leave catheters inserted
in the Trainer.

Do not attempt to remove a catheter
which has an inflated balloon.



Do not use anaesthetic gel – use mock
gel supplied with trainer.

Do not disassemble the product or
attempt to repair a faulty unit, please
return the product to Limbs & Things
for assessment and repair.



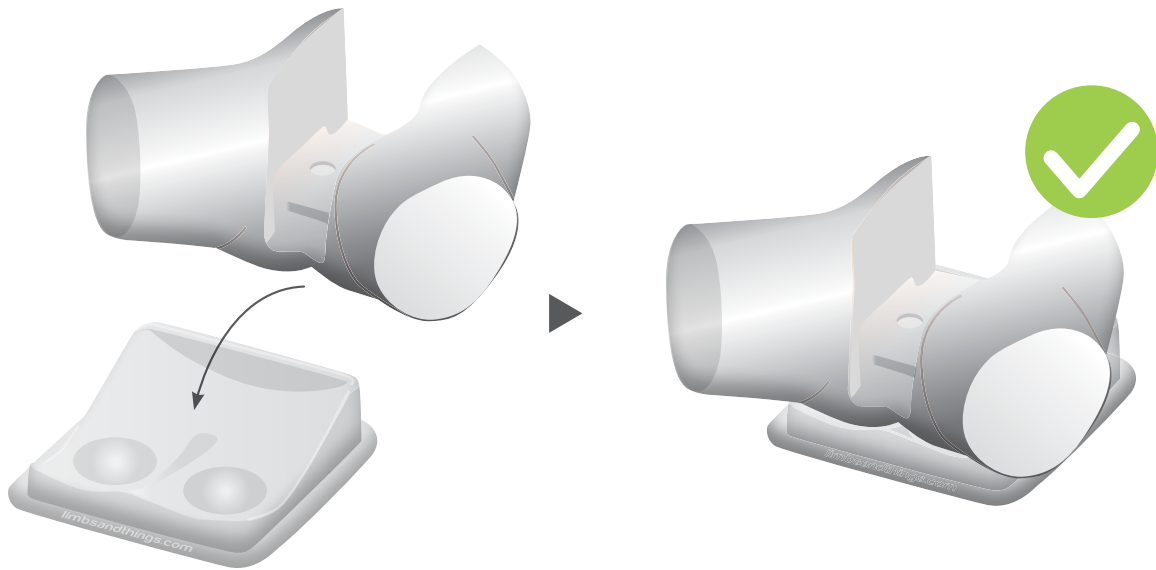
Do not leave trainer set up with water in.
Disassemble & clean after every use.

STORAGE & TRANSPORTATION

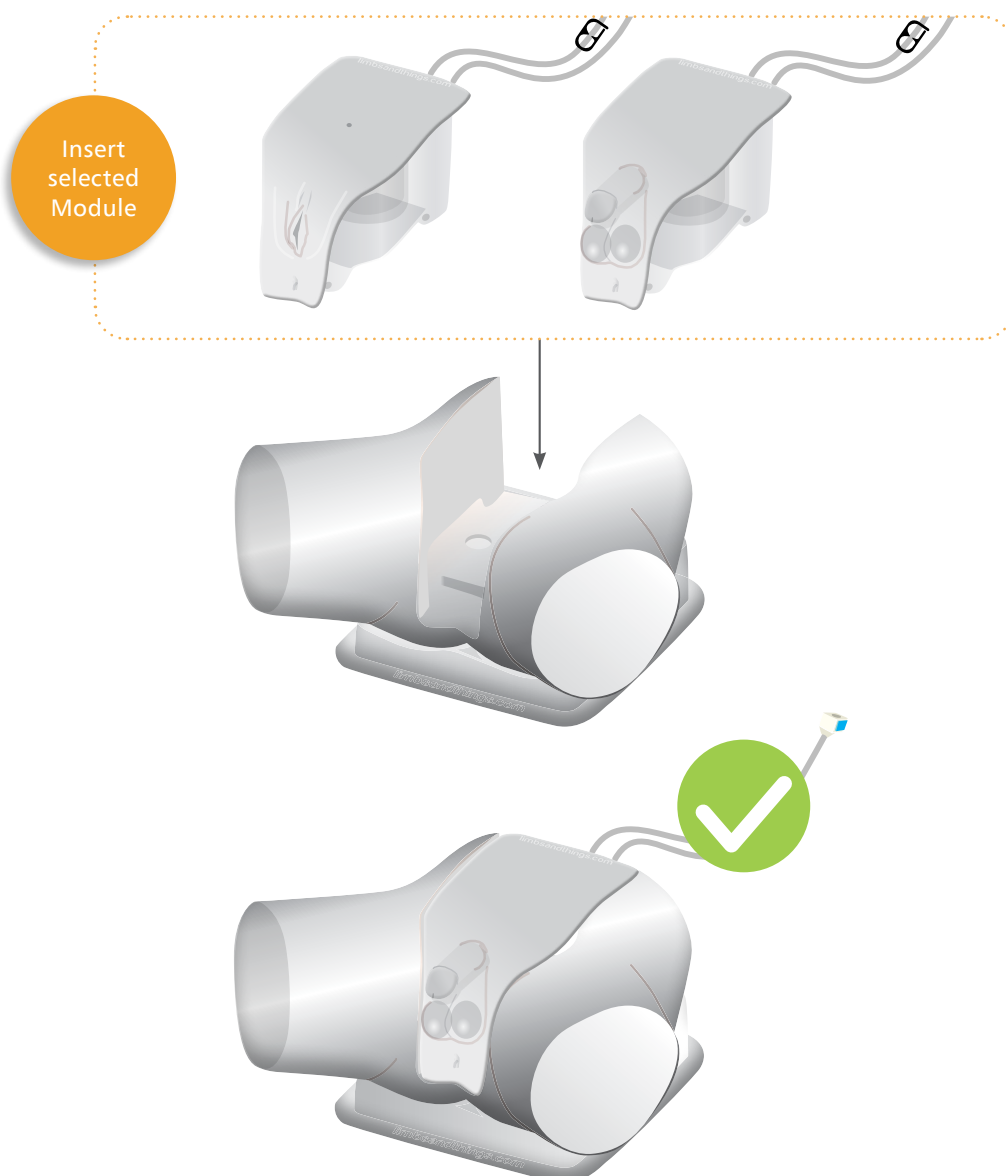


Always ensure that the product is properly
packed and secured during transportation
and storage in order to prevent personal
injury or damage to the product.

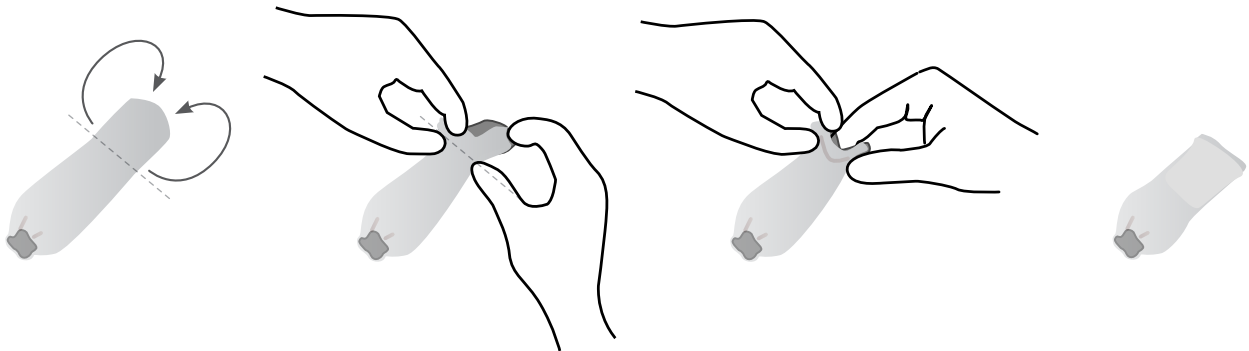
1



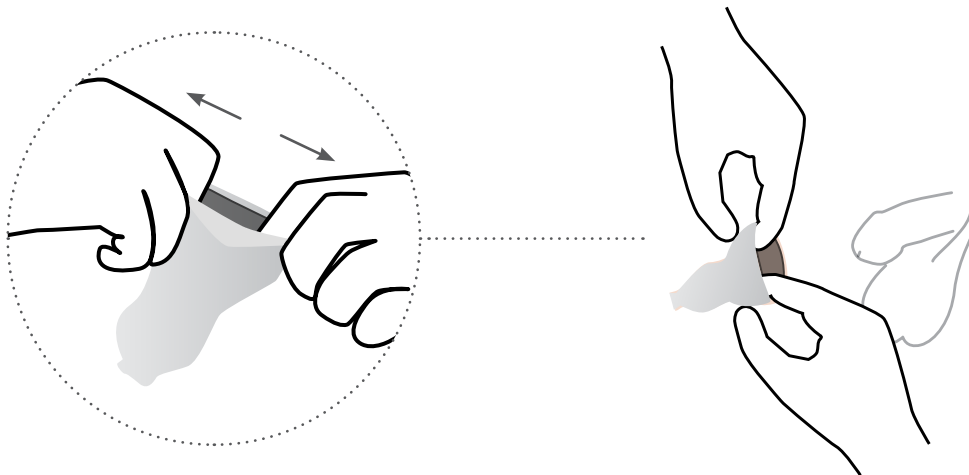
2



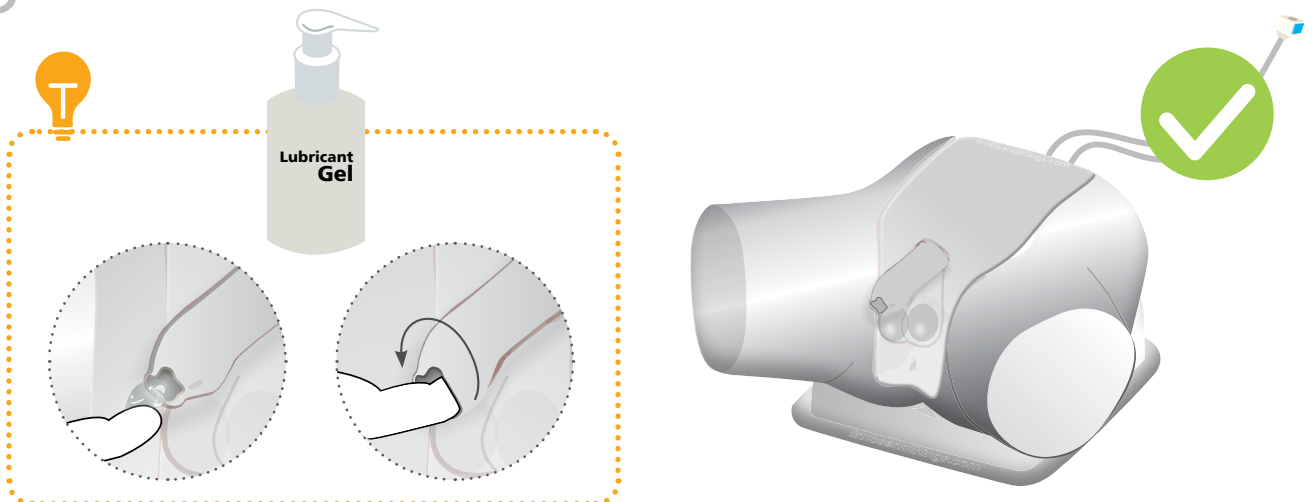
1



2

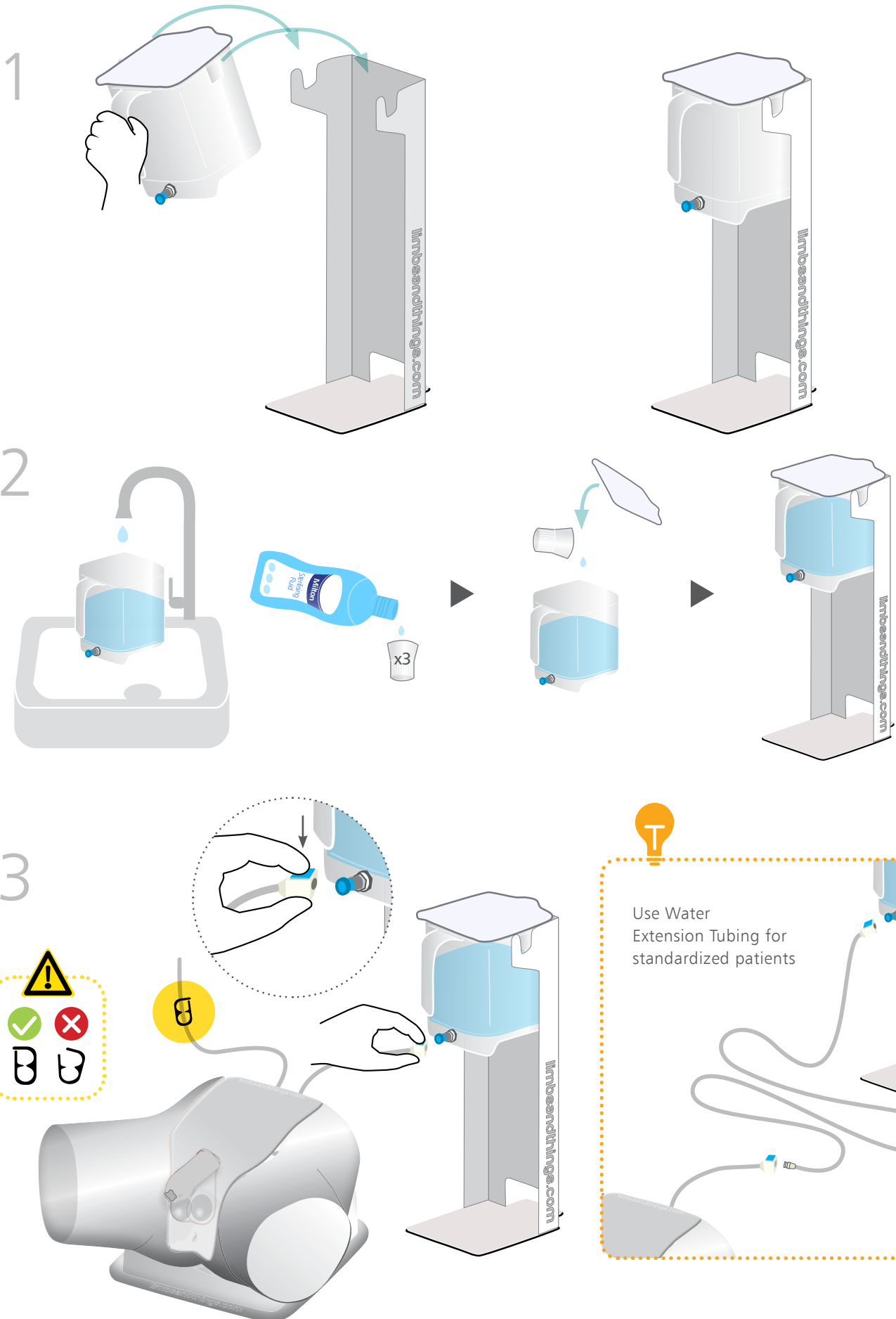


3

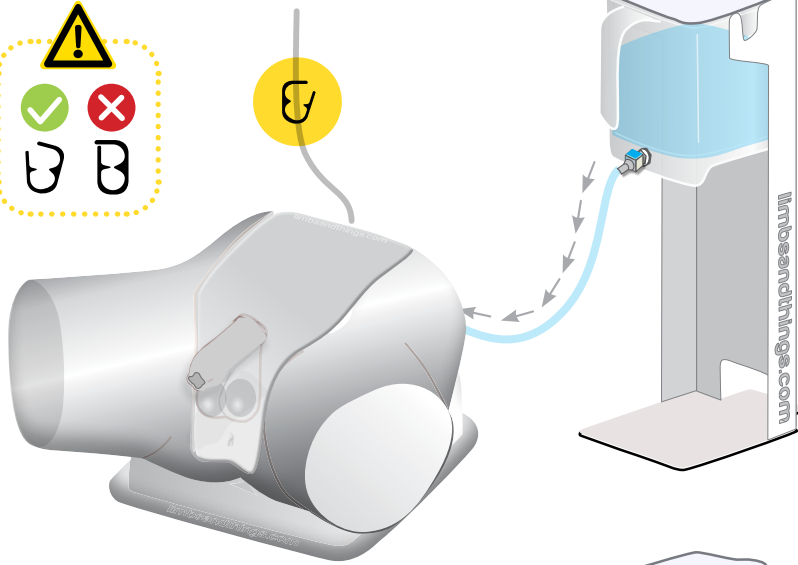


SET UP

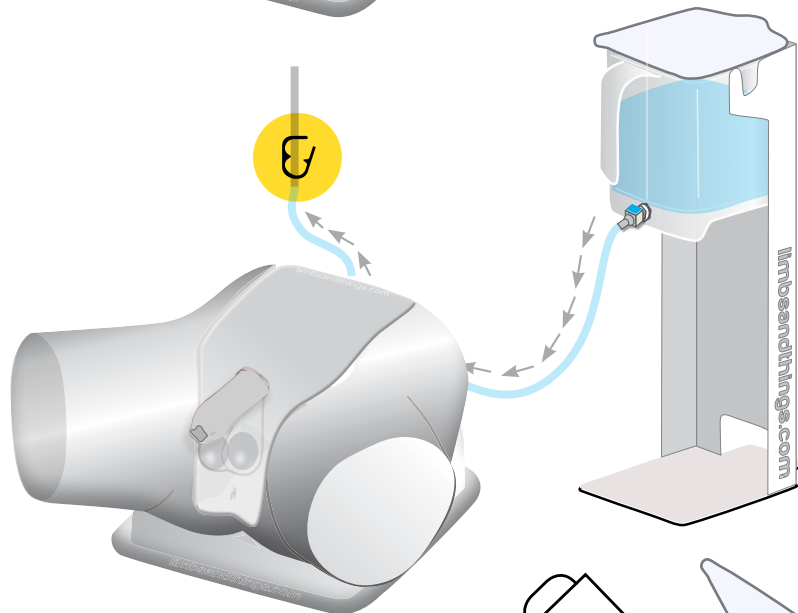
ASSEMBLING THE WATER SYSTEM



4



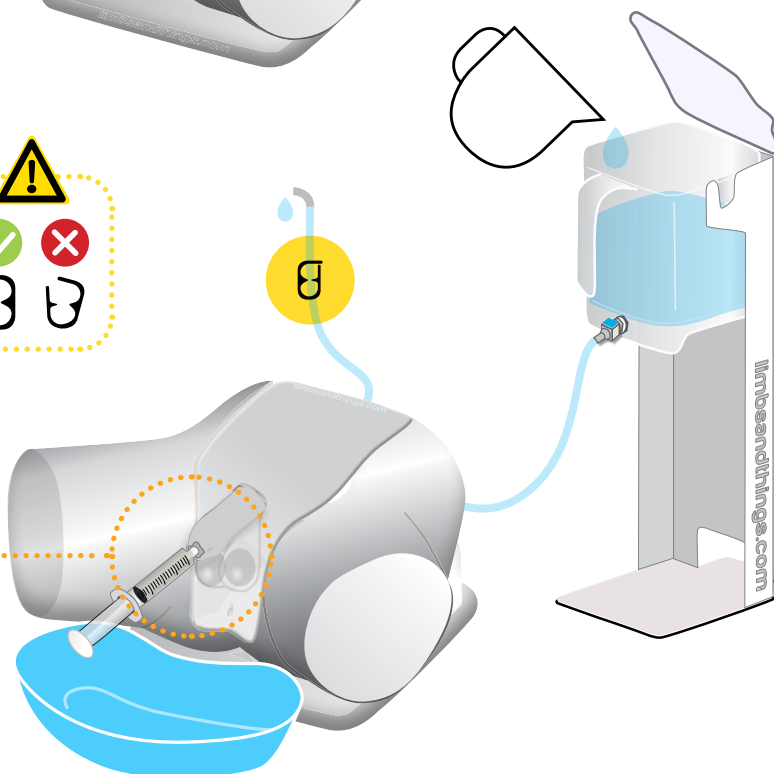
5



6



10ml during set up.
5-10ml per catheter
insertion



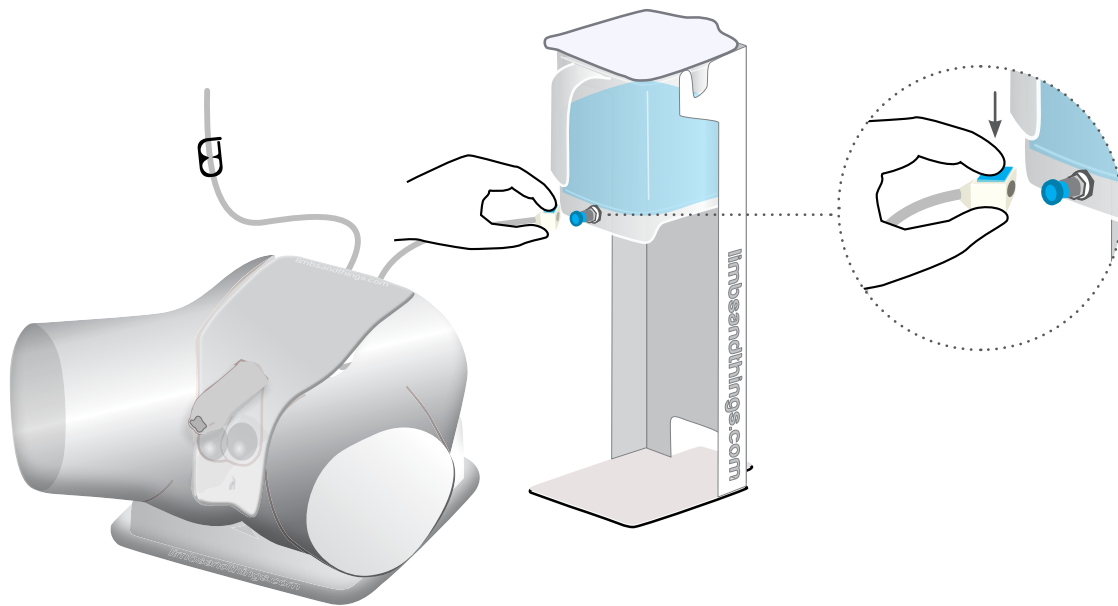
Keep water
reservoir topped up



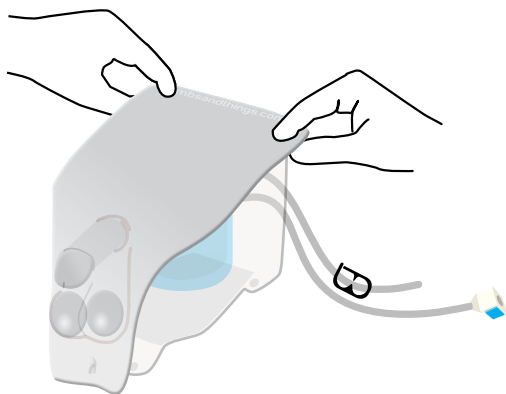
SET UP

EMPTYING WATER

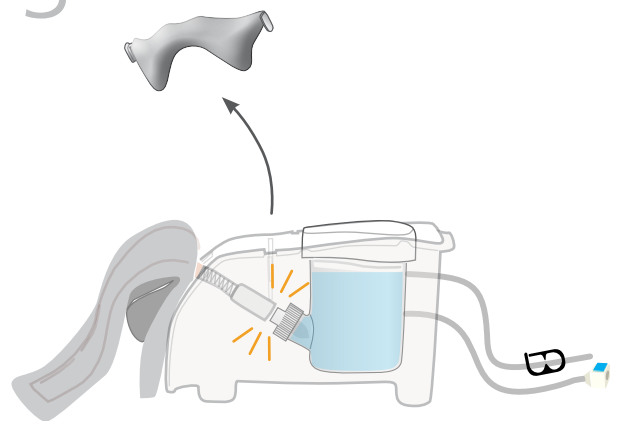
1



2



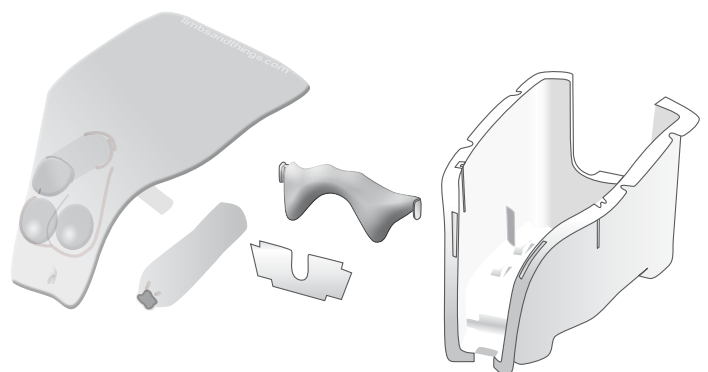
3



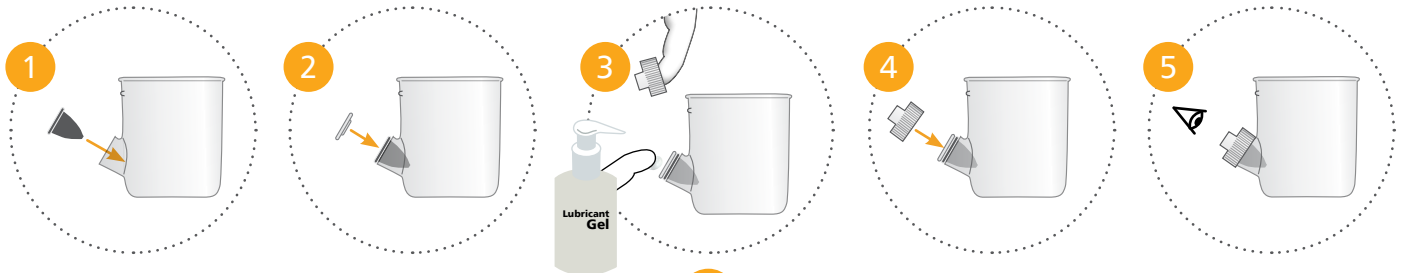
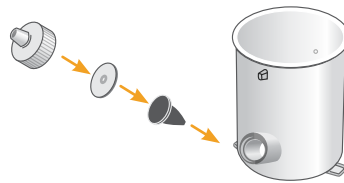
4



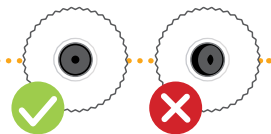
Dry all parts with paper towel
Reassemble and put in box



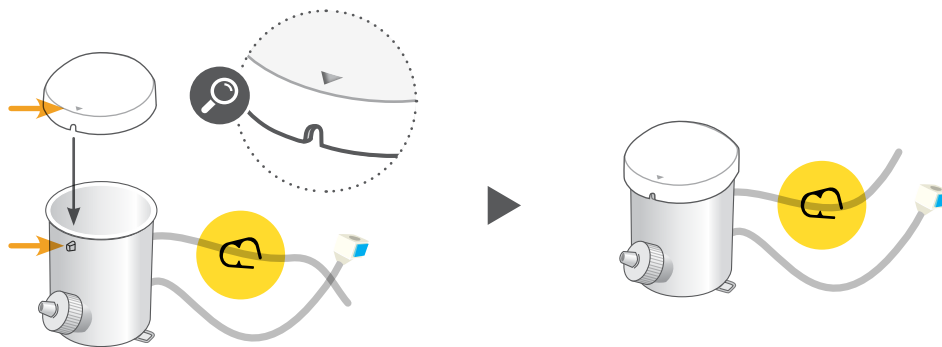
1



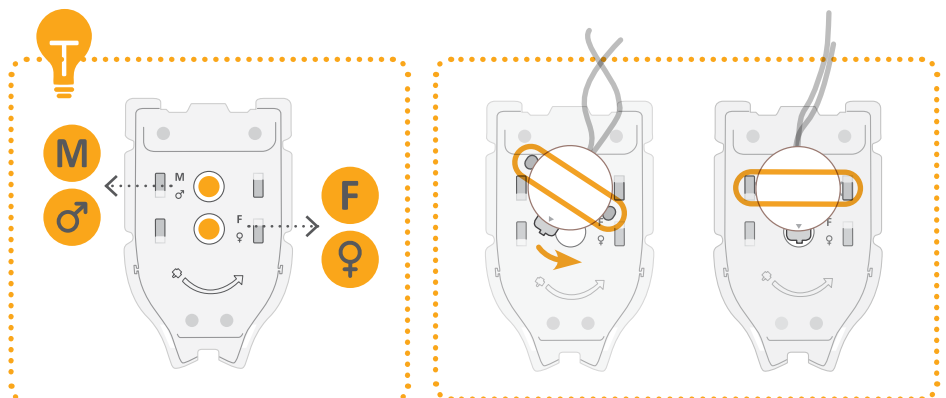
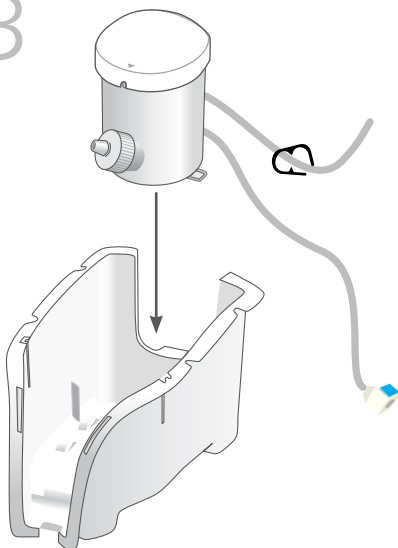
Add lubrication to diaphragm
before replacing lid



2

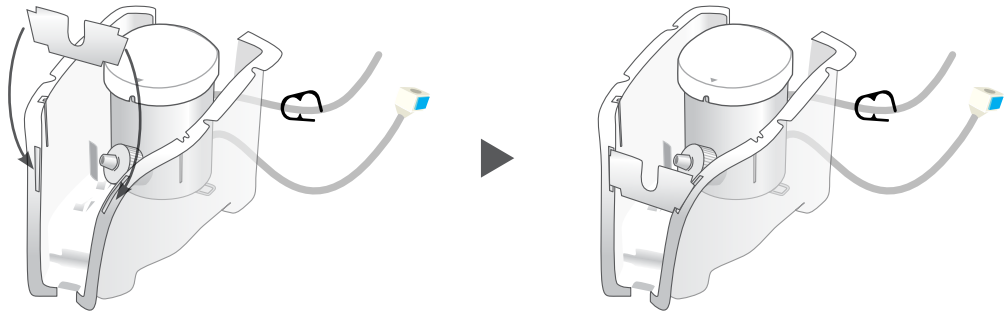


3

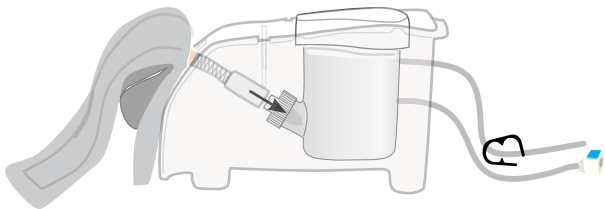


4

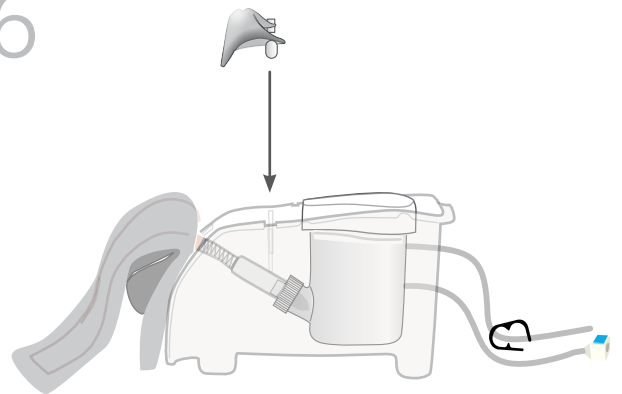
Only for
Male
Module



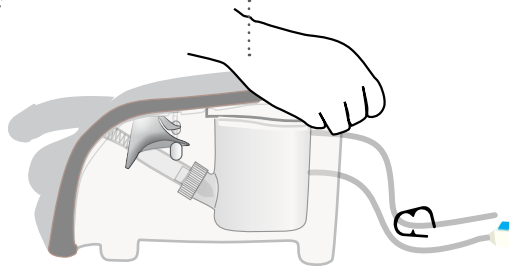
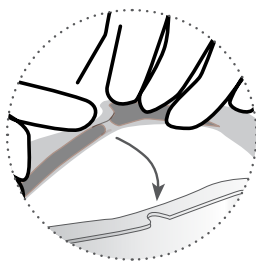
5



6



7





AUGMENTED REALITY TRAINING (ART)

for your Catheterization Trainer

SAFETY & CLEANING INSTRUCTIONS

Read the safety instructions
carefully before using your
ART Mat

DO's



Follow all instructions.
Keep these instructions.
Pay attention to all warnings.

Use mat on flat surface



Only use attachments/accessories
specified by Limbs & Things

Refer all servicing to qualified service
personnel. Servicing is required when
the apparatus has been damaged



DON'Ts



Do not install near any heat sources,
expose the product to flames or use
near naked flame sources.
Do not use flammable solvents near
or on this product

Do not set up the product near
electrical appliances or items
damaged by water



Do not cover the graphic of the mat
with other items

Do not move the mat with a
model on top of it



STORAGE



Store rolled up with print on the
outside



Don't fold



Don't place heavy objects on top

CLEANING



Can be cleaned with water, soap, and
non-alcoholic cleaning agents



Avoid abrasive and
alcoholic cleaning agents

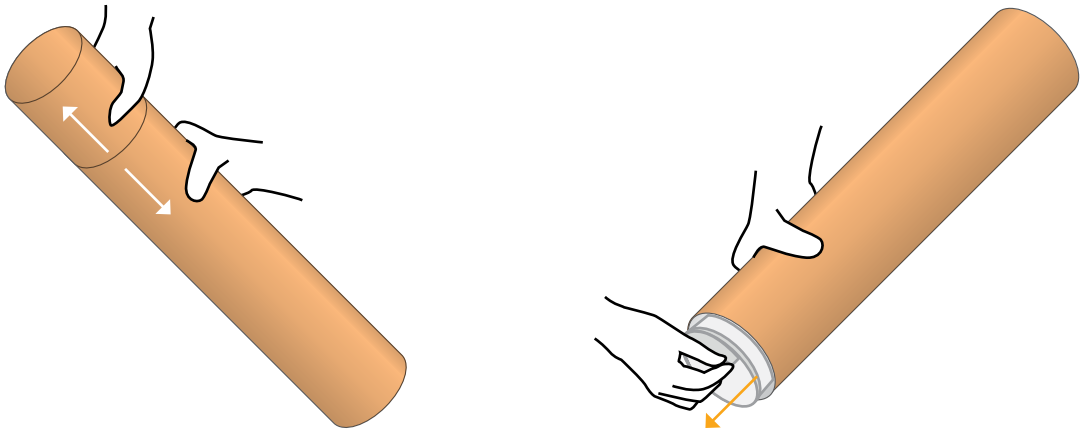


Make sure mat is dry before storing

ART SET UP

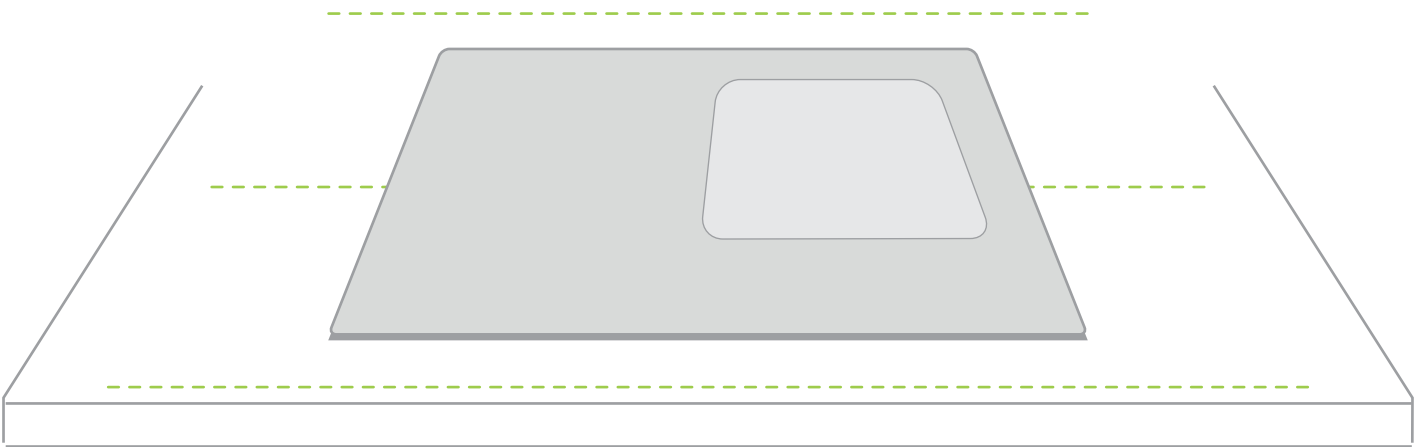
1

Take the mat out of tube



2

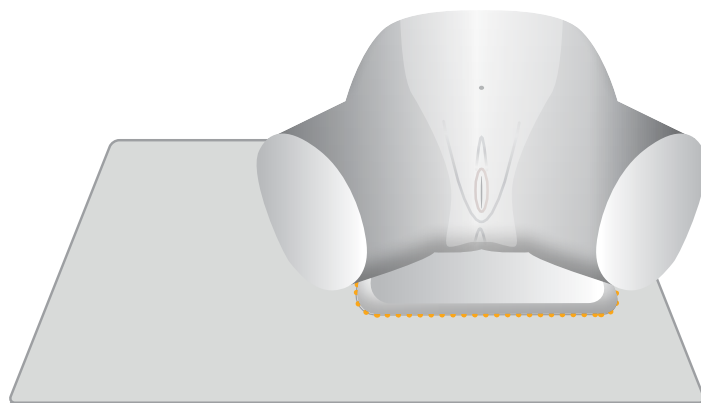
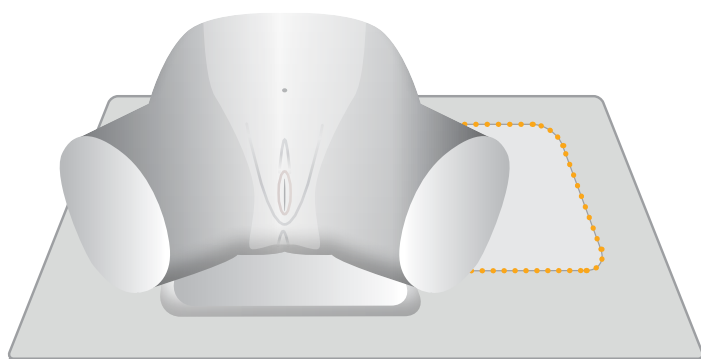
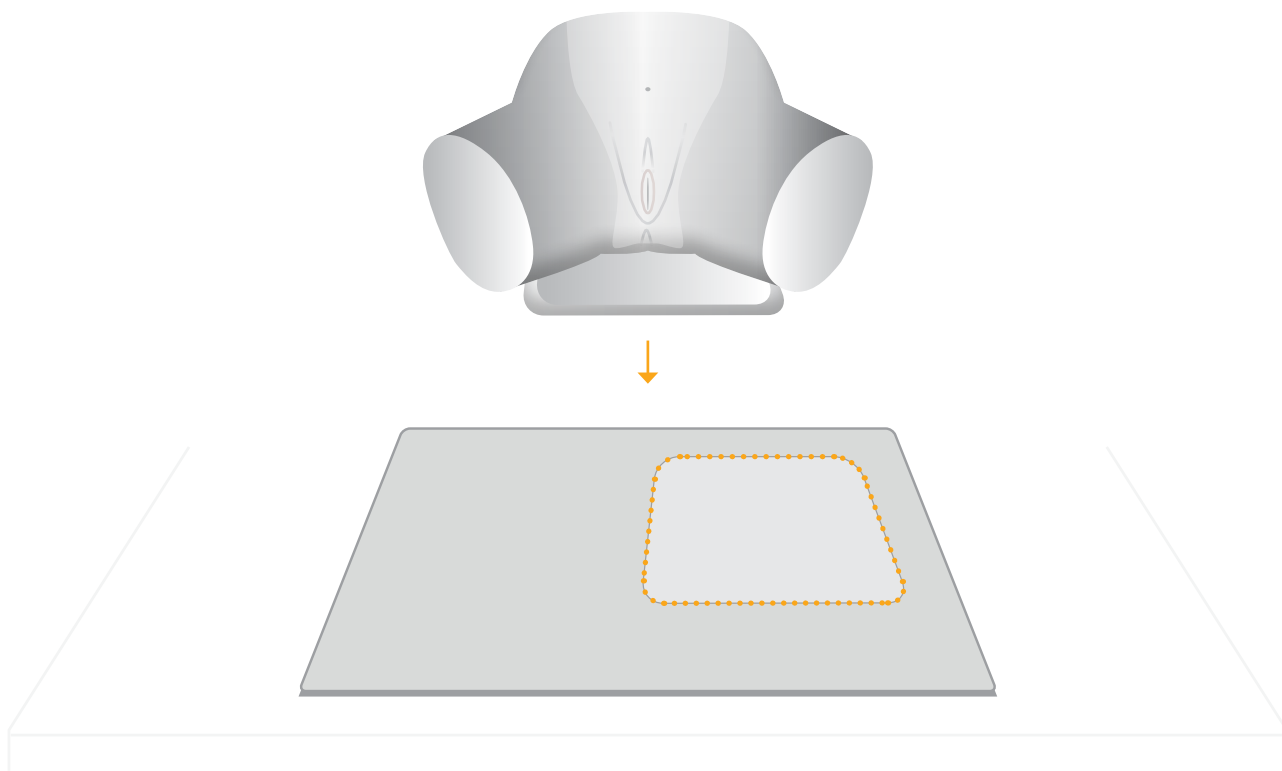
Place the mat on a table



Note: Diagrams are for illustrative purposes, your product may differ from the example shown

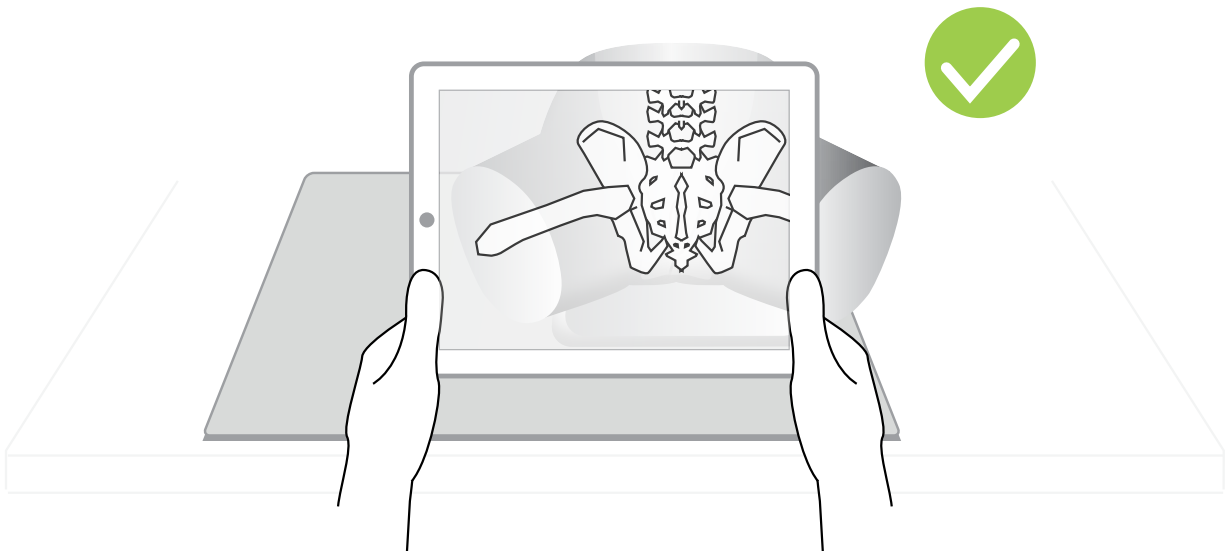
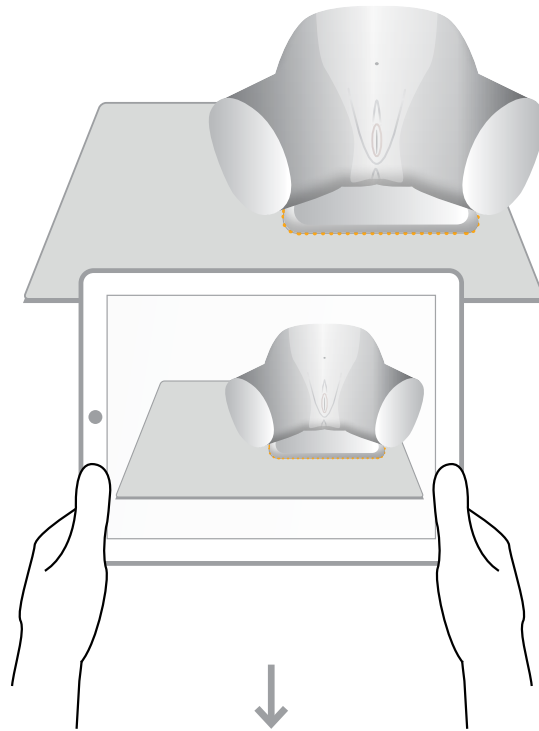
3

Place the model on the designated area of the mat



Note: Diagrams are for illustrative purposes, your product may differ from the example shown

Use the A.R.T. app to scan the mat



For app troubleshooting please visit the website.

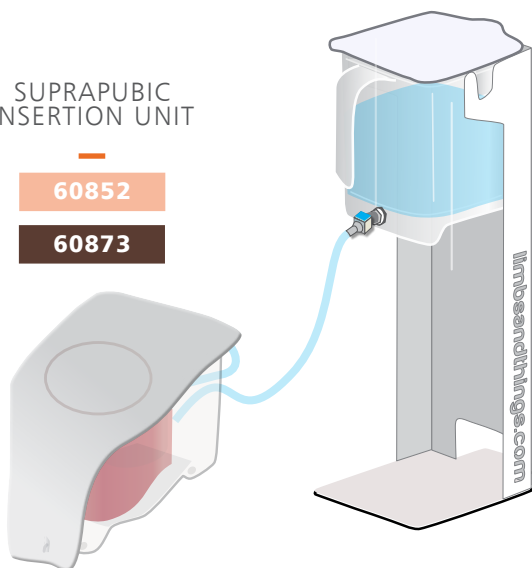
Note: Diagrams are for illustrative purposes, your product may differ from the example shown

YOU MAY
ALSO BE
INTERESTED IN...

SUPRAPUBIC
INSERTION UNIT

60852

60873



MEDIUM
CARRY CASE

40209



limbs&
things

Part No: 965-511

Issue 07, May 2025

© 2025 Limbs & Things



FM 818255